

NOTES: UNLESS OTHERWISE SPECIFIED

1. INSTALLATION INSTRUCTIONS: ITEM 6 COIL SPRING LIFTS ITEM 2 RETAINER, ITEM 7 DISC SPRINGS, ITEM 10 WASHER, ITEM 9 DOWEL PIN & ITEM 3 FOOT PEDAL SO THAT THE FITTING ASSEMBLY CAN SLIDE INTO POSITION IN THE SEAT TRACK. ONCE THE FITTING IS IN POSITION, THE INSTALLER DEPRESSES THE FOOT PEDAL, AND LOWERS THE RETAINER ONTO THE SEAT TRACK. ONCE THE RETAINER CONTACTS THE SEAT TRACK, THE DISC SPRING, WHICH HAS A MUCH HIGHER SPRING LOAD THAN THE COIL SPRING, GETS COMPRESSED. ONCE THE FOOT PEDAL REACHES IT'S LOCKING POSITION, ITEM 5 DETENT PLUNGER RELEASES IT'S PLUNGER INTO HOLE ON FOOT PEDAL LOCKS IT IN PLACE. COMPRESSION OF WAVE SPRING PROVIDES ANTI-RATTLE FEATURE.

REMOVAL INSTRUCTIONS: DEPRESS FOOT PEDAL SLIGHTLY TO RELIEVE DISC SPRING FORCE. INSERT TOOL INTO HOLE ON END OF FOOT PEDAL AND PUSH PLUNGER FORWARD TO DISENGAGE FROM HOLE ON FOOT PEDAL.

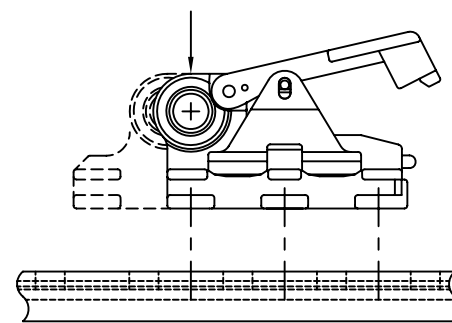
2. OPTIONAL SUGGESTED SEAT FRAME INSTALLATION HARDWARE KIT.

NOTE: PROPER MATING OF THE FITTING TO THE SEAT REQUIRES THE MOUNTING HARDWARE SPECIFIED IN THIS KIT. THIS HARDWARE MAY BE PROCURED FROM ANCR INTERNATIONAL OR INDEPENDENTLY BY THE USER. IF ANY OTHER HARDWARE IS USED, THEN MOUNTING HARDWARE WILL NOT BE WARRANTED.

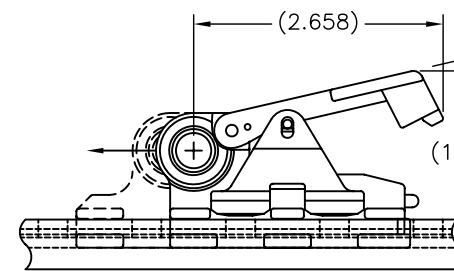
THE INFORMATION AND DESIGN DISCLOSED HEREIN WAS ORIGINATED BY AND IS THE PROPERTY OF ANCR INTERNATIONAL. ANCR INTERNATIONAL RESERVES ALL PATENT PROPRIETARY, DESIGN, MANUFACTURING, REPRODUCTION, USE AND SALES RIGHTS THERETO, AND TO ANY ARTICLE DISCLOSED HEREIN, EXCEPT TO THE EXTENT RIGHTS ARE EXPRESSLY GRANTED TO OTHERS IN WRITING. THE FOREGOING DOES NOT APPLY TO VENDOR PROPRIETARY PARTS.

REVISION RECORD (SEE ENGR. ORDERS FOR DESC. OF PREV. REVISIONS)					
REV	DESCRIPTION	BY	CHK	APP	DATE
A	UPDATED -12 & -13 BODY PROFILE	SHL			

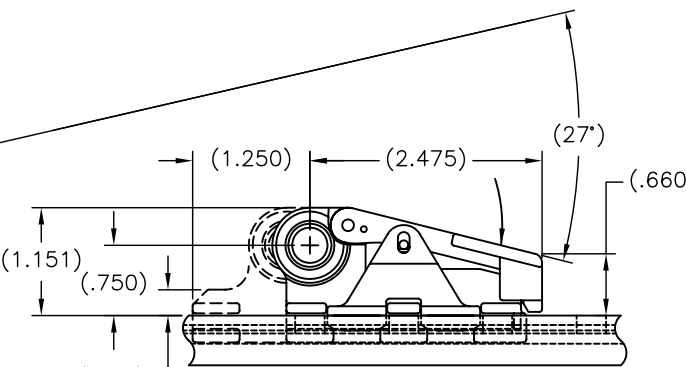
CONFIGURATION VARIATION TABLE	
DASH NO.	DESCRIPTION
-10	STANDARD BODY, STANDARD PLUNGER
-11	STANDARD BODY, REDUCED PLUNGER
-12	ELONGATED BODY, STANDARD PLUNGER
-13	ELONGATED BODY, REDUCED PLUNGER



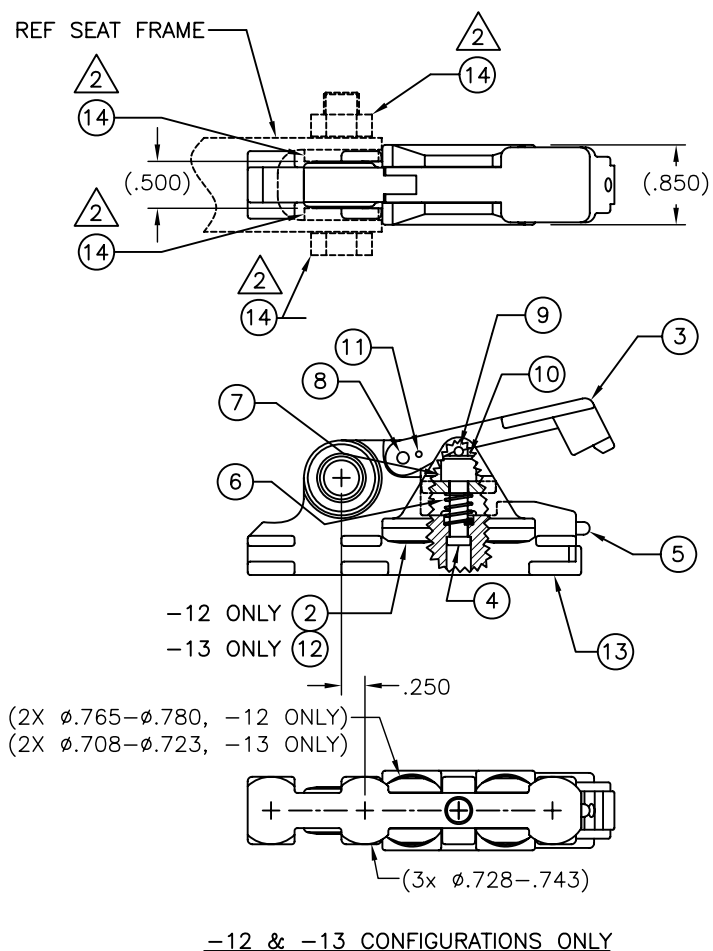
1. LOWERED INTO SEAT TRACK



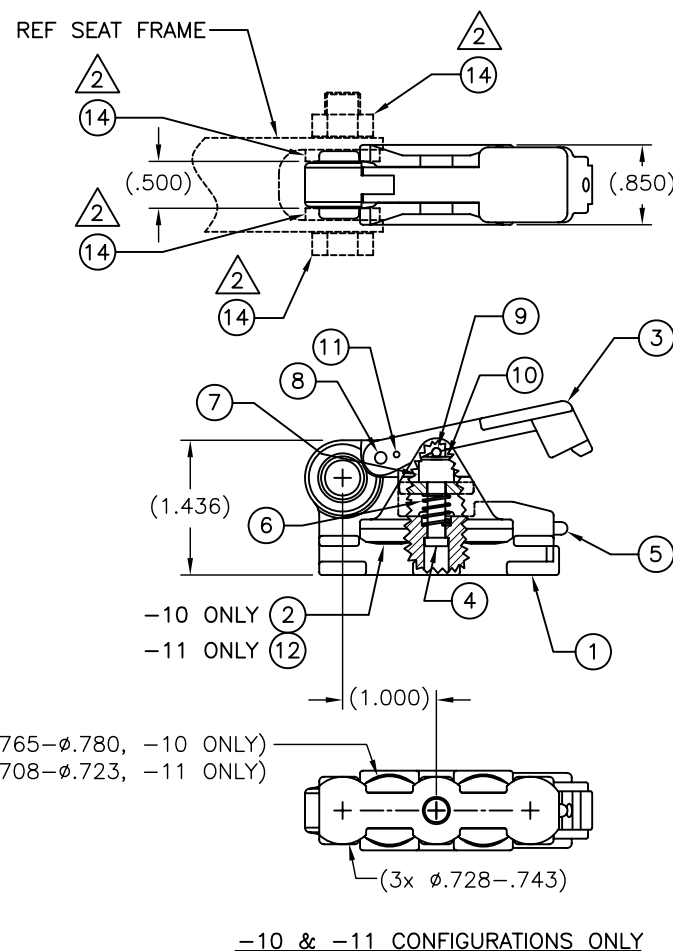
2. PUSH FORWARD 1/2 INCH



3. LOCKED IN SEAT TRACK



-12 & -13 CONFIGURATIONS ONLY



-10 & -11 CONFIGURATIONS ONLY

OPT	OPT	OPT	OPT	14	49642-XX	REAR INSTALLATION HARDWARE KIT			
1	1	-	-	13	49624-11	BODY, ELONGATED			STAINLESS STEEL
1	-	1	-	12	49625-11	RETAINER, REDUCED			STAINLESS STEEL
1	1	1	1	11		SLOTTED SPRING PIN	$\phi.063 \times .375$		STAINLESS STEEL
1	1	1	1	10		NAS 620 WASHER	.195IDx.354ODx.032THK		STAINLESS STEEL
1	1	1	1	9		DOWEL PIN	$\phi.094 \times .375$		STAINLESS STEEL
1	1	1	1	8		DOWEL PIN	$\phi.125 \times .625$		STAINLESS STEEL
9	9	9	9	7		BELLEVILLE DISC SPRING	.190IDx.375ODx.020THK		STAINLESS STEEL
1	1	1	1	6	43392-10	COMPRESSION SPRING			STAINLESS STEEL
1	1	1	1	5		DETENT PLUNGER	5/16-18		STAINLESS STEEL
1	1	1	1	4	49627-10	RETAINER PIN			STAINLESS STEEL
1	1	1	1	3	49626-10	FOOT PEDAL			STAINLESS STEEL
-	1	-	1	2	49625-10	RETAINER, STANDARD			STAINLESS STEEL
-	-	1	1	1	49624-10	BODY			STAINLESS STEEL
-13	-12	-11	-10	ITEM	PART NO.	NOMENCLATURE	STOCK SIZE	MATERIAL	MATERIAL SPEC/SOURCE

UNLESS OTHERWISE SPECIFIED THIS DWG. CONFORMS WITH ANSI Y14.5 ALL MACH SURFACES TO BE 125/ PER ASA B46.1 AND FREE FROM FLAWS. BREAK ALL SHARP EDGES .015 R MAX. REMOVE ALL BURRS. FILLET RADII .010 MAX. PART MARKINGS TO CONFORM TO ECS-820 DIMENSIONS ARE IN INCHES. DIMENSIONS APPLY AFTER FINISH. TOLERANCES: .X ±.1 .XX ±.03 .XXX ±.010 ANGLES ± 1°' ACAP DRAWING	SCALE: 1:1	CALC WEIGHT LBS. SH10F1	FSCM 31272	SIZE D	DWG. NO. 49623 Cat. A
CUSTOMER APPROVAL	DRAWN STEVE LEE 02/28/07	CHECKED	ENGINEER	STRESS	APPROVED
	FINISH	HEAT TREAT	TITLE REAR TOOL-LESS SEAT FITTING		



REV DWG. NO. 49623 Cat. SH 1