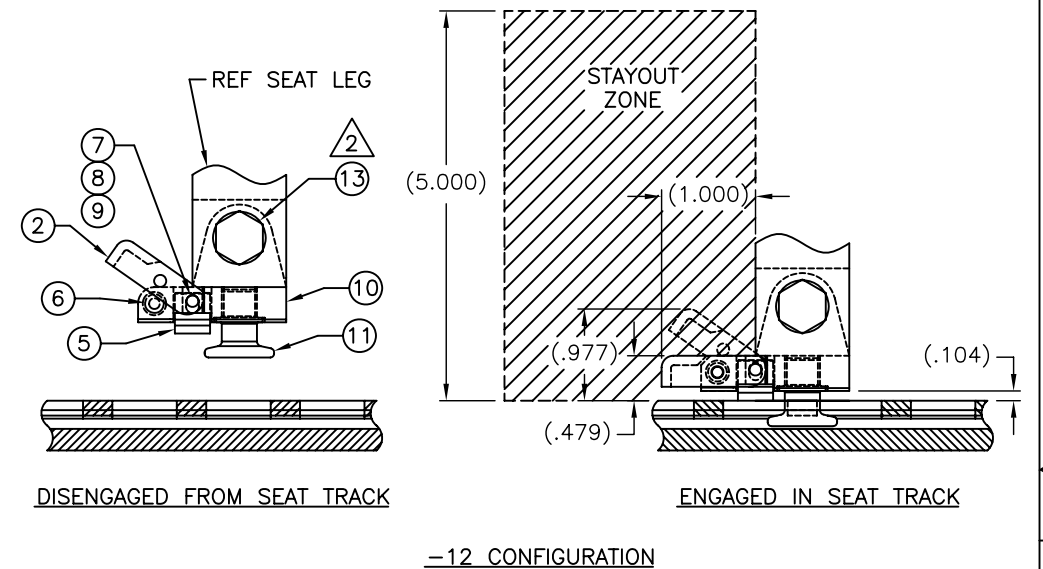
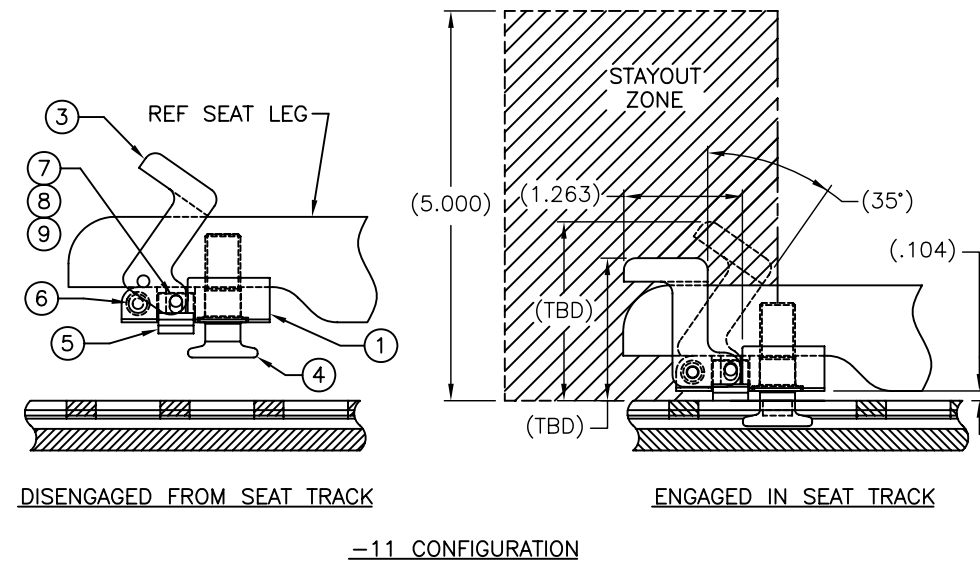
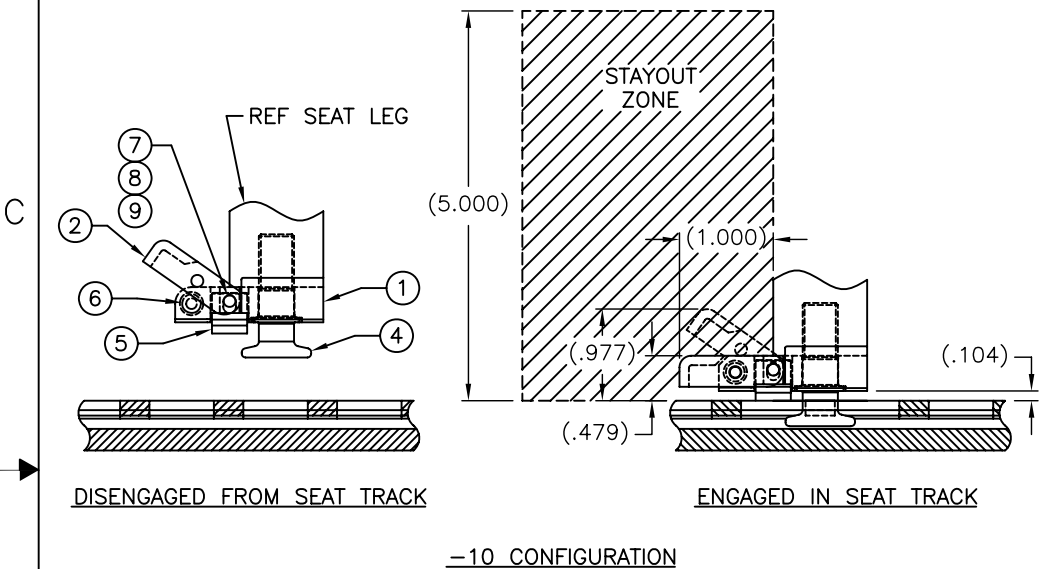
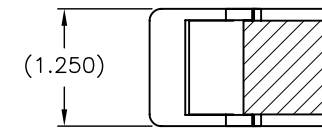
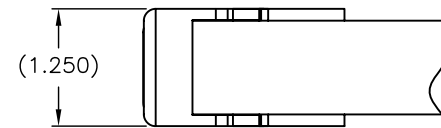
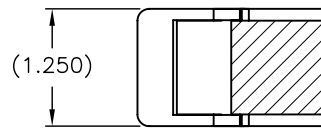


THE INFORMATION AND DESIGN DISCLOSED HEREIN WAS ORIGINATED BY AND IS THE PROPERTY OF ANCRA INTERNATIONAL. ANCRA INTERNATIONAL RESERVES ALL PATENT PROPRIETARY, DESIGN, MANUFACTURING, REPRODUCTION, USE AND SALES RIGHTS THEREON, AND TO ANY ARTICLE DISCLOSED HEREIN, EXCEPT TO THE EXTENT RIGHTS ARE EXPRESSLY GRANTED TO OTHERS IN WRITING. THE FOREGOING DOES NOT APPLY TO VENDOR PROPRIETARY PARTS.

| REVISION RECORD (SEE ENGR. ORDERS FOR DESC. OF PREV. REVISIONS) | | | | | |
|---|----------------------------|-----|-----|-----|------|
| REV | DESCRIPTION | BY | CHK | APP | DATE |
| A | UPDATED FOOT PEDAL PROFILE | SHL | | | |

| CONFIGURATION VARIATION TABLE | |
|-------------------------------|----------------------------------|
| DASH NO. | DESCRIPTION |
| -10 | STANDARD STRAIGHT FRONT SEAT LEG |
| -11 | SWEPT FORWARD FRONT SEAT LEG |
| -12 | CLEVIS TYPE FRONT SEAT LEG |



NOTES: UNLESS OTHERWISE SPECIFIED

1. INSTALLATION INSTRUCTIONS: LOWER FRONT FITTING INTO SEAT TRACK. SLIDE SEAT ASSEMBLY FORWARD 1/2 INCH INTO POSITION. REAR SEAT FITTING MUST BE ENGAGED FIRST TO PROVIDE PROPER POSITIONING. INSTALLER THEN DEPRESSES ITEM 2 OR 3 PEDAL WHICH LOWERS ITEMS 5 PLUNGER & 6 ANTI-RATTLE PAD, ONTO TOP OF SEAT TRACK. FURTHER LOWERING OF PEDAL COMPRESSES ANTI-RATTLE PAD UNTIL ITEM 7 DETENT PLUNGER ENGAGES WITH HOLE IN THE PEDAL AND LOCKS PEDAL INTO PLACE. COMPRESSION OF ANTI-RATTLE PAD PROVIDES THE ANTI-RATTLE FEATURE.

REMOVAL INSTRUCTIONS: DEPRESS FOOT PEDAL SLIGHTLY TO RELIEVE ANTI-RATTLE PAD FORCE. INSERT TOOL INTO HOLE ON SIDE OF FOOT PEDAL AND PUSH PLUNGER FORWARD TO DISENGAGE FROM HOLE ON PEDAL.

2. OPTIONAL SUGGESTED SEAT FRAME INSTALLATION HARDWARE.

NOTE: PROPER MATING OF THE FITTING TO THE SEAT REQUIRES THE MOUNTING HARDWARE SPECIFIED IN THIS KIT. THIS HARDWARE MAY BE PROCURED FROM ANCRA INTERNATIONAL OR INDEPENDENTLY BY THE USER. IF ANY OTHER HARDWARE IS USED, THEN MOUNTING HARDWARE WILL NOT BE WARRANTED.

| QTY | ITEM | PART NO. | NOMENCLATURE | STOCK SIZE | MATERIAL | MATERIAL SPEC/SOURCE |
|-----|------|----------|-----------------------------|---------------|-----------------|----------------------|
| 1 | 12 | 49641-XX | FRONT INSTALLATION HARDWARE | | | |
| 1 | 11 | 49639-11 | STUD, SHORT | | STAINLESS STEEL | |
| 1 | 10 | 49637-11 | BASE, CLEVIS | | STAINLESS STEEL | |
| 1 | 9 | | TORSION SPRING, RIGHT | | STAINLESS STEEL | |
| 1 | 8 | | TORSION SPRING, LEFT | | STAINLESS STEEL | |
| 1 | 7 | | DOWEL PIN | Ø.125 X 1.25" | STAINLESS STEEL | |
| 1 | 6 | | DETENT PLUNGER | 1/4-20 | STAINLESS STEEL | |
| 1 | 5 | 49640-10 | PLUNGER ASSEMBLY | | STAINLESS STEEL | |
| 1 | 4 | 49639-10 | STUD | | STAINLESS STEEL | |
| 1 | 3 | 49638-11 | PEDAL, SWEEP LEG | | STAINLESS STEEL | |
| 1 | 2 | 49638-10 | PEDAL, STRAIGHT LEG | | STAINLESS STEEL | |
| 1 | 1 | 49637-10 | BASE | | STAINLESS STEEL | |

| | | |
|---|---|--|
| <p>UNLESS OTHERWISE SPECIFIED THIS DWG. CONFORMS WITH ANSI Y14.5 ALL MACH SURFACES TO BE 125/ PER ASA B46.1 AND FREE FROM FLAWS. BREAK ALL SHARP EDGES .015 R MAX. REMOVE ALL BURRS. FILLET RADII .010 MAX. PART MARKINGS TO CONFORM TO ECS-820 DIMENSIONS ARE IN INCHES. DIMENSIONS APPLY AFTER FINISH. TOLERANCES: .X ±.1 .XX ±.03 ANGLES ± 1'0' .XXX ±.010 FRACTIONS ±</p> <p>ACAP DRAWING</p> | <p>DRAWN: STEVE LEE 02/28/07</p> <p>CHECKED: _____</p> <p>ENGINEER: _____</p> <p>STRESS: _____</p> <p>APPROVED: _____</p> | <p>TITLE: FRONT TOOL-LESS SEAT FITTING</p> |
| <p>CUSTOMER APPROVAL: _____</p> <p>SCALE: 1:1</p> | <p>FINISH: _____</p> <p>HEAT TREAT: _____</p> | <p>ANCRA INTERNATIONAL HAWTHORNE, CA 90250</p> |

REV DWG. NO. 49636 (Cat)

SH 1

A