



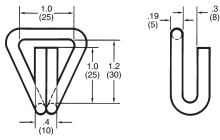
Ancra hooks, rings and loops are made to last. With heat treatment and corrosion-resistant plating or vinyl-coating, this quality attachment hardware is strong and durable.

Wire Hooks



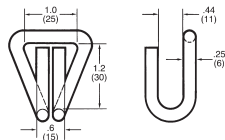
1-inch Narrow Hook
Part No. 40316-12

Breaking Strength:
500 lbs./227 kg.
Working Load Limit:
166 lbs./75 kg.
Code: CR
Weight: .10 lb./05 kg.



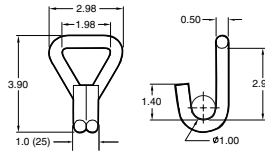
1-inch Narrow Hook
Part No. 40024-10

Breaking Strength:
3,000 lbs./1,363 kg.
Working Load Limit:
1,000 lbs./454 kg.
Code: 21
Weight: .10 lb./05 kg.



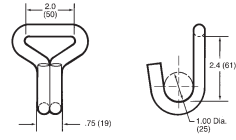
1-3/4 inch Narrow Hook
Part No. 43120-19

Breaking Strength:
1,500 lbs./680 kg.
Working Load Limit:
500 lbs./227 kg.
Code 5W
Weight: .17 lb./08 kg.



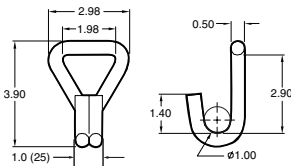
2-inch Narrow Hook
Part No. 43120-11

Breaking Strength:
5,000 lbs./2,272 kg.
Working Load Limit:
1,666 lbs./757 kg.
Code: 2L
Weight: .39 lb./18 kg.



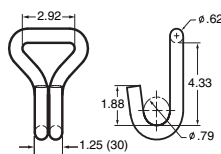
2-inch Narrow Hook
Part No. 43120-13

Breaking Strength:
10,000 lbs./4,545 kg.
Working Load Limit:
3,333 lbs./1,575 kg.
Code: 5L
Weight: .62 lb./28 kg.



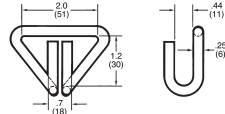
3-inch Narrow Hook
Part No. 43120-20

Breaking Strength:
22,000 lbs./10,000 kg.
Working Load Limit:
7,333 lbs./3,333 kg.
Code: CF
Weight: 1.39 lbs./63 kg.



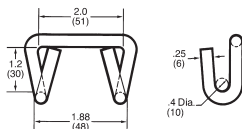
2-inch Narrow Hook
Part No. 40024-12

Breaking Strength:
2,500 lbs./1,136 kg.
Working Load Limit:
833 lbs./378 kg.
Code: 11
Weight: .10 lb./05 kg.



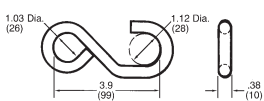
2-inch Wide Hook
Part No. 40023-12

Breaking Strength:
2,500 lbs./1,136 kg.
Working Load Limit:
833 lbs./378 kg.
Code: 10
Weight: .12 lb./06 kg.



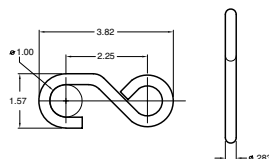
1-inch S Hook
Part No. 41313-12

Breaking Strength:
1,200 lbs./545 kg.
Working Load Limit:
400 lbs./181 kg.
Code: 41
Weight: .28 lb./13 kg.



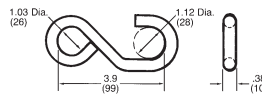
1-inch Light-Duty S Hook
Part No. 43095-10

Breaking Strength:
500 lbs./227 kg.
Working Load Limit: 1
66 lbs./75 kg.
Code: 3G
Weight: .14 lb./07 kg.



1-inch Vinyl S Hook
Part No. 41313-13

Breaking Strength:
1,200 lbs./545 kg.
Working Load Limit:
400 lbs./181 kg.
Code 42
Weight: .29 lb./14 kg.





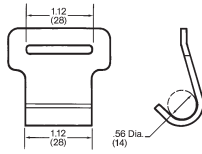
Flat Hooks



1-inch Gutter Hook

Part No. 43546-10

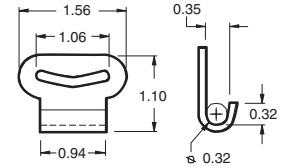
Breaking Strength: 750 lbs./340 kg.
Working Load Limit: 250 lbs./113 kg.
Code: 9L Weight: .05 lb./02 kg.



1-inch Plated Flat Hook

Part No. 40065-10

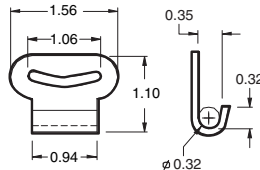
Breaking Strength: 1,000 lbs./454 kg.
Working Load Limit: 333 lbs./151 kg.
Code: 20 Weight: .04 lb./02 kg.



1-inch Vinyl Flat Hook

Part No. 40065-12

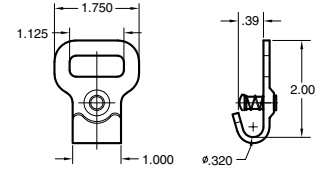
Breaking Strength: 1,000 lbs./454 kg.
Working Load Limit: 333 lbs./151 kg.
Code: 4H Weight: .05 lb./02 kg.



1-inch Flat Hook with Keeper

Part No. 40044-10

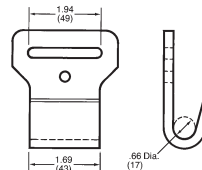
Breaking Strength: 3,500 lbs./1,590 kg.
Working Load Limit: 1,166 lbs./530 kg.
Code: 3A Weight: .68 lb./31 kg.



2-inch Flat Hook

Part No. 43099-10

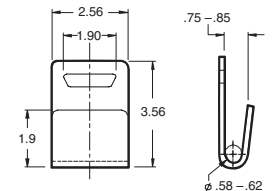
Breaking Strength: 5,000 lbs./2,272 kg.
Working Load Limit: 1,666 lbs./757 kg.
Code: 7C Weight: .40 lb./18 kg.



2-inch Flat Hook

Part No. 40891-18

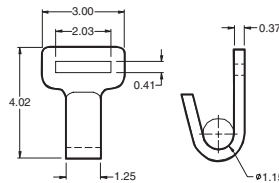
Breaking Strength: 10,000 lbs./4,545 kg.
Working Load Limit: 3,333 lbs./1,515 kg.
Code: 02 Weight: .68 lb./31 kg.



2-inch Flat Hook

Part No. 41519-10

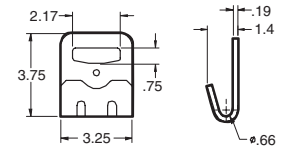
Breaking Strength: 10,000 lbs./4,545 kg.
Working Load Limit: 3,333 lbs./1,515 kg.
Code: 5C Weight: 1.14 lbs./52 kg.



3-inch Flat Hook

Part No. 41766-18

Breaking Strength: 16,200 lbs./7,363 kg.
Working Load Limit: 5,400 lbs./2,454 kg.
Code: CP Weight: .98 lb./45 kg.



3-inch Flat Hook with Keeper

Part No. 41766-12

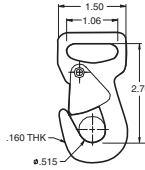
Breaking Strength: 15,000 lbs./6,818 kg.
Working Load Limit: 5,000 lbs./2,272 kg.
Code: 3D Weight: 1.20 lbs./55 kg.

Ankra standard heavy duty flat hook straps have wear clips to prevent abrasion.





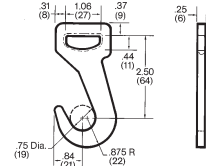
Snap Hooks



1-inch Snap Hook

Part No. 43044-10

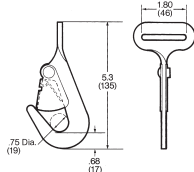
Breaking Strength: 5,000 lbs./2,272 kg. Working Load Limit: 1,666 lbs./757 kg.
Code: 5A Weight: .20 lb./09 kg.



1-inch Hook

Part No. 44922-15

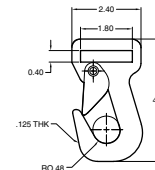
Breaking Strength: 3,300 lbs./1,500 kg. Working Load Limit: 1,100 lbs./500 kg.
Code: 1P Weight: .15 lb./07 kg.



2-inch Snap Hook

Part No. 44887-12

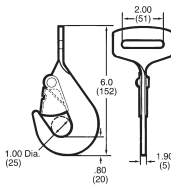
Breaking Strength: 5,000 lbs./2,272 kg. Working Load Limit: 1,666 lbs./757 kg.
Code: CN Weight: .32 lb./15 kg.



2-inch Snap Hook

Part No. 40084-14

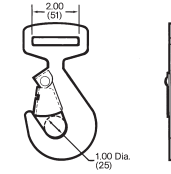
Breaking Strength: 6,300 lbs./2,863 kg. Working Load Limit: 2,100 lbs./954 kg.
Code: O1 Weight: .34 lb./15 kg.



2-inch Snap Hook w/ Satin Black Finish

Part No. 40758-11 Twisted Version

Breaking Strength: 10,000 lbs./4,545 kg. Working Load Limit: 3,333 lbs./1,515 kg.
Code: 9D Weight: .59 lb./27 kg.

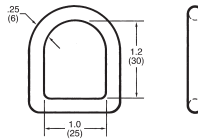


2-inch Snap Hook w/ Satin Black Finish

Part No. 40758-13

Breaking Strength: 10,000 lbs./4,545 kg. Working Load Limit: 3,333 lbs./1,515 kg.
Code: 1E Weight: .59 lb./27 kg.

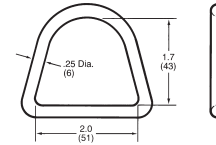
Rings



1-inch D-Ring

Part No. 40025-10

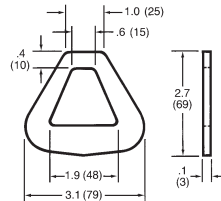
Breaking Strength: 5,000 lbs./2,272 kg. Working Load Limit: 1,666 lbs./757 kg.
Code 22 Weight: .05 lb./02 kg.



2-inch D-Ring

Part No. 40025-12

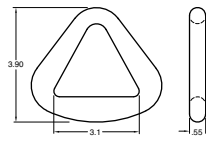
Breaking Strength: 5,000 lbs./2,272 kg. Working Load Limit: 1,666 lbs./757 kg.
Code: 12 Weight: .09 lb./04 kg.



2-inch Delta Ring

Part No. 40978-11

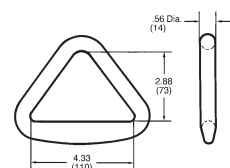
Breaking Strength: 10,000 lbs./4,545 kg. Working Load Limit: 3,333 lbs./1,515 kg.
Code: 4O Weight: .28 lb./13 kg.



3-inch Delta Ring

Part No. 45516-12

Breaking Strength: 18,000 lbs./8,181 kg. Working Load Limit: 6,000 lbs./2,727 kg.
Code: CJ Weight: 1.05 lbs./48 kg.



4-inch Delta Ring

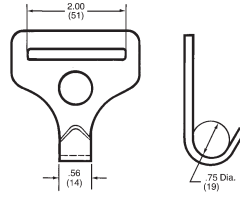
Part No. 41631-11

Breaking Strength: 20,000 lbs./9,090 kg. Working Load Limit: 6,666 lbs./3,030 kg.
Code: 2M Weight: 1.16 lbs./53 kg.



Track Fittings

Designed to fit securely into Ancra Track, sturdy Ancra Track Fittings are easy to use and long wearing.



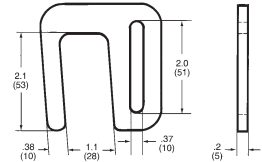
Series F Heavy-Duty Track Hook

Part No. 42012-12

Breaking Strength: 2,400 lbs./1,090 kg.

Working Load Limit: 800 lbs./363 kg.

Code: CA Weight: .21 lb./10 kg.



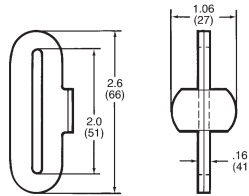
Slat Hook For use with Attachment Rails (Wooden Slats)

Part No. 41325-10

Breaking Strength: 3,000 lbs./1,363 kg.

Working Load Limit: 1,000 lbs./454 kg.

Code: 30 Weight: .20 lb./09 kg.



Series F Track Fitting

Part No. 40980-11

Breaking Strength: 1,500 lbs./681 kg.

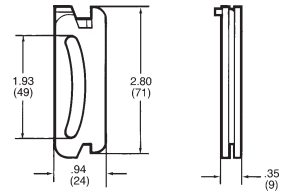
Working Load Limit: 500 lbs./227 kg.

Code: 09 Weight: .60 lb./27 kg.

Part No. 40980-13

For 1" hole diameter track (Canada)

Code: CM Weight: .60 lb./27 kg.



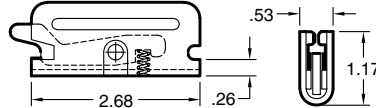
Series E & A 3-Piece Track Fitting

Part No. 41409-13

Breaking Strength: 3,000 lbs./1,363 kg.

Working Load Limit: 1,000 lbs./454 kg.

Code: 6H Weight: .20 lb./09 kg.



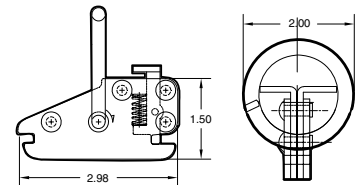
Series E & A Track Spring Fitting

Part No. 47608-21

Breaking Strength: 3,000 lbs./1,363 kg.

Working Load Limit: 1,000 lbs./454 kg.

Code: 9V Weight: .30 lb./14 kg.



Series E & A Articulated Track Fitting

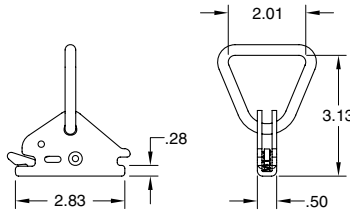
Part No. 47772-12

Breaking Strength: 3,000 lbs./1,363 kg.

Working Load Limit: 1,000 lbs./454 kg.

Higher loads achievable in different directions of pull and using stronger track configurations.

Code: 6U Weight: .45 lb./20 kg.



Series E & A Fitting w/D-Ring

Part No. 49542-10

Breaking Strength: 3,000 lbs./1,363 kg.

Working Load Limit: 1,000 lbs./454 kg.

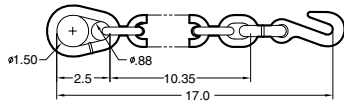
Code: CV Weight: .32 lb./15 kg.



Visit our website: www.ancra.com



Chain Attachments



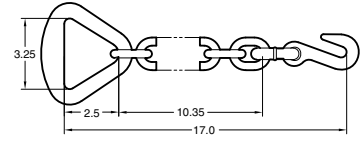
Chain Anchor w/ Pear Shaped Ring

Part No. 43366-12

Breaking Strength: 16,200 lbs./7,363 kg.

Working Load Limit: 5,400 lbs./2,454 kg.

Code: CG Weight: 3.30 lbs./1.50 kg.



Chain Anchor with Delta Ring, Plated

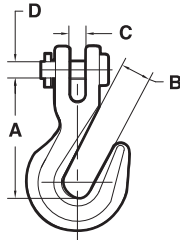
Part No. 43366-14

Breaking Strength: 16,200 lbs./7,363 kg.

Working Load Limit: 5,400 lbs./2,454 kg.

Code: CH Weight: 3.40 lbs./1.55 kg.

Clevis Hook



Specifications

Part No.	Size	Breaking Strength	Working Load Limit	Weight
45946-10	5/16"	18,800 lbs./8,545 kg.	4,700 lbs./2,132 kg.	0.85 lb./0.39 kg.
45946-11	3/8"	26,400 lbs./12,000 kg.	6,600 lbs./2,994 kg.	1.10 lbs./0.50 kg.
45946-13	1/2"	51,000 lbs./23,133 kg.	12,750 lbs./5,783 kg.	2.29 lbs./1.04 kg.

Dimensions

Part No.	A	B	C	D
45946-10	2.30"	0.43"	0.38"	0.38"
45946-11	2.70"	0.50"	0.44"	0.48"
45946-13	3.20"	0.66"	0.75"	0.63"

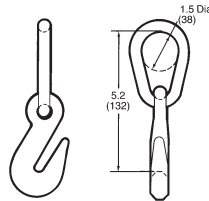
Grab Hook Assembly, Plated

Part No. 43365-12

Breaking Strength: 16,200 lbs./7,363 kg.

Working Load Limit: 5,400 lbs./2,454 kg.

Code: CK Weight: 1.60 lbs./.73 kg.

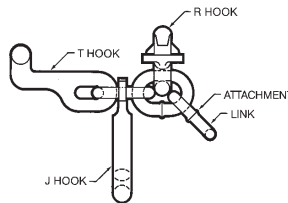


RTJ Cluster Hook

Part No. 45515-10

Code: 2P

Weight: 2.25 lbs./1.02 kg.



Our commitment to quality is never ending



All Ankra products and components are fully tested to meet our exacting standards.

Hook Type	Breaking Strength	Working Load Limit
R (Ford)	25,000 lbs./11,363 kg.	8,333 lbs./3,787 kg.
T (General Motors, Chrysler)	16,000 lbs./7,272 kg.	5,333 lbs./2,424 kg.
J (Foreign)	12,000 lbs./5,454 kg.	4,000 lbs./1,818 kg.