



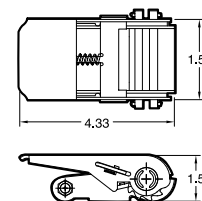
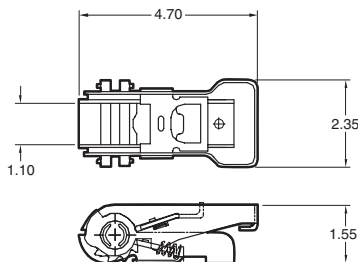
The standard of the industry, Ancra's durable buckles are designed with a unique latch and patented fast release cam that reduces sprocket wear. Our broad line of steel Ratchet, Cam and Overcenter Buckles meet your wide-ranging load requirements, offering quick and easy release and secure locking tension.

Ratchet Buckles

Ancra Ratchet Buckles are available in one- or three-piece standard- or long-handled versions, and a variety of webbing widths and thicknesses. When closed, the ratchet handle locks the latch into the sprocket to prevent inadvertent release. The handle cross-pin interlocks with the frame, maintaining a low-profile design and reinforcing assembly durability. A removable rear bolt allows for in-field conversion or repairs.



1-inch



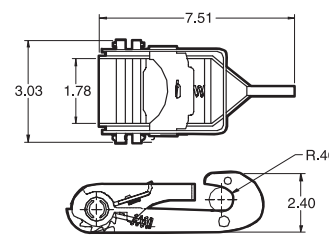
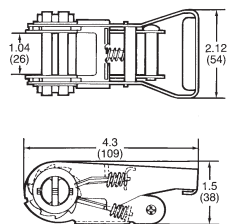
Part No. 43320-32

Part No. 43320-33 With bolt and nut

Breaking Strength: 4,400 lbs./2,000 kg.
Working Load Limit: 1,466 lbs./666 kg.
Code No.: 2H
Weight: .81 lb./36 kg.
Code No.: 3H (on -33)

Part No. 48770-10 Low profile, black powder coat

Breaking Strength: 1,500 lbs./681 kg.
Working Load Limit: 500 lbs./227 kg.
Code No.: BX
Weight: .50 lb./22 kg.



Part No. 44232-10

Breaking Strength: 1,200 lbs./545 kg.
Working Load Limit: 400 lbs./181 kg.
Code No.: 8L
Weight: .50 lb./22 kg.

Part No. 41808-11 1 3/4 in. Hook End

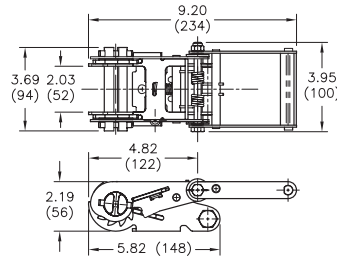
Breaking Strength: 6,600 lbs./3,000 kg.
Working Load Limit: 2,200 lbs./1,000 kg.
Code No.: 1Q
Weight: 1.65 lbs./75 kg.

ANCR A BUCKLE QUALITY

The now-popular and often copied long, wide-handle ratchet is a classic example of Ancra innovation. Our patented locking mechanism guards against vibration release, the 1.5-inch longer handle increases leverage by 20%, and the wider frame and latch design allows more hand room for easier operation. What began as innovation, is now the standard of the industry.



2-inch



Part No. 49410-12 Long Wide Handle Torque Limiting

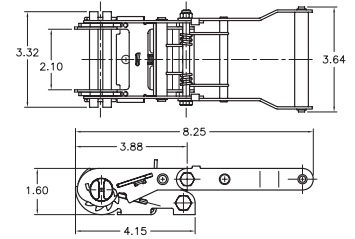
Reduces trailer damage by limiting over zealous tensioning. See pg. 36.

Breaking Strength: 11,000 lbs./4,990 kg.

Working Load Limit: 3,666 lbs./1,663 kg.

Code No.: CW Weight: 2.77 lbs./1.26 kg.

PATENTED



Part No. 49715-10 Low Profile Torque Limiting

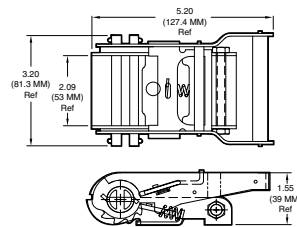
Reduces trailer damage by limiting over zealous tensioning. See pg. 36.

Breaking Strength: 4,500 lbs./2,045 kg.

Working Load Limit: 1,500 lbs./681 kg.

Code: DA Weight: 1.56 lbs./.71 kg.

PATENTED



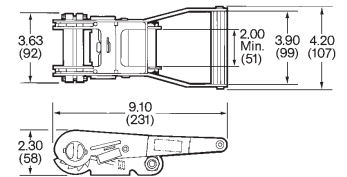
Part No. 44258-13 Low Profile

Breaking Strength: 4,500 lbs./2,045 kg.

Working Load Limit: 1,500 lbs./681 kg.

Code No.: 9X

Weight: 1.30 lbs./.59 kg.



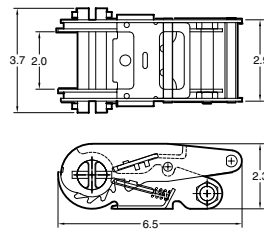
Part No. 44587-10 Long Wide Handle

Breaking Strength: 11,000 lbs./5,000 kg.

Working Load Limit: 3,666 lbs./1,666 kg.

Code No.: 4N

Weight: 2.3 lbs./1.05 kg.



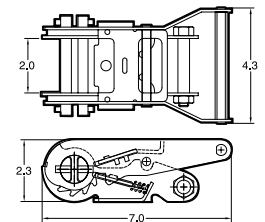
Part No. 44627-11 Standard Handle

Breaking Strength: 10,000 lbs./4,545 kg.

Working Load Limit: 3,333 lbs./1,515 kg.

Code No.: 3P

Weight: 2.10 lbs./.95 kg.



Part No. 47105-11 Short Wide Handle

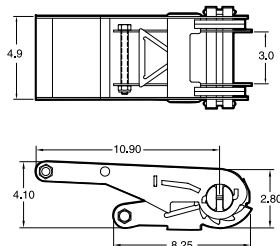
Breaking Strength: 11,000 lbs./5,000 kg.

Working Load Limit: 3,666 lbs./1,666 kg.

Code No.: 9Q

Weight: 2.20 lbs./1.0 kg.

3-inch



Part No. 48965-10

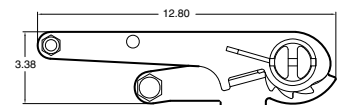
Breaking Strength: 22,000 lbs./10,000 kg.

Working Load Limit: 7,333 lbs./3,333 kg.

Code No.: BZ

Weight: 7.05 lbs./3.20 kg.

4-inch



Part No. 49349-10

Breaking Strength: 24,000 lbs./10,909 kg.

Working Load Limit: 8,000 lbs./3,636 kg.

Code No.: CL

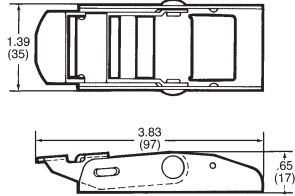
Weight: 7.95 lbs./3.61 kg.



Overcenter Buckles

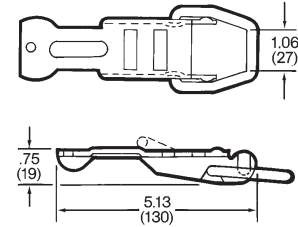
Ankra Overcenter Buckles have one-piece steel frame construction for simple, efficient use. When attached to the strap, the webbing provides a pad between the buckle and the secured cargo.

1-inch



Part No. 42816-18

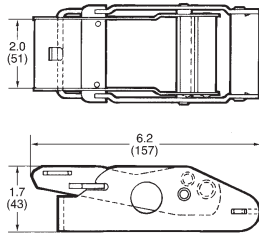
Breaking Strength: 1,800 lbs./818 kg.
Working Load Limit: 600 lbs./272 kg.
Code: 4Q
Weight: .15 lb./06 kg



Part No. 44905-11

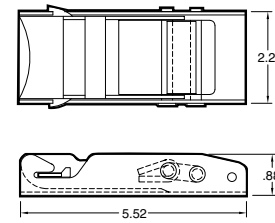
Breaking Strength: 3,300 lbs./1,500 kg.
Working Load Limit: 1,100 lbs./500 kg.
Code: 7Q
Weight: .20 lb./10 kg.

1 3/4-inch



Part No. 44639-12

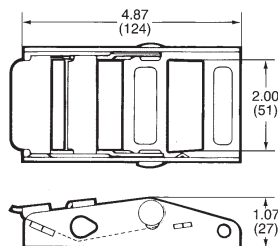
Breaking Strength: 5,000 lbs./2,272 kg.
Working Load Limit: 1,666 lbs./757 kg.
Code: 3N
Weight: 1.20 lbs./54 kg.



Part No. 47800-10

Breaking Strength: 5,000 lbs./2,272 kg.
Working Load Limit: 1,666 lbs./757 kg.
Code: 2U
Weight: .70 lb./31 kg.

2-inch



Part No. 43172-11

Breaking Strength: 3,000 lbs./1,363 kg.
Working Load Limit: 1,000 lbs./454 kg.
Code: 3E
Weight: .75 lb./34 kg.

In addition to the trucking industry, Ankra buckles are used in specialty markets that include aircraft, marine, automotive, materials handling and military applications. In each case, material specifications have been modified to give optimum performance for the specific use.

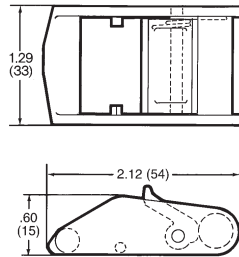




Cam Buckles

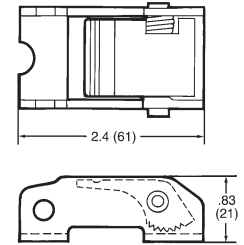
A one-piece frame design lengthens the service life of Ankra Cam Buckles. Quick and easy operation consists of simply pulling the handhold.

1-inch



Part No. 41030-10

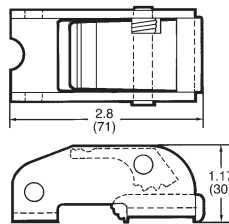
Breaking Strength: 500 lbs./227 kg.
Working Load Limit: 166 lbs./75 kg.
Code: 91
Weight: .13 lb./06 kg.



Part No. 42195-10

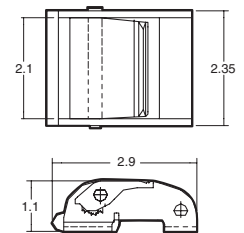
Breaking Strength: 1,500 lbs./681 kg.
Working Load Limit: 500 lbs./227 kg.
Code: 5D
Weight: .25 lb./11 kg.

2-inch



Part No. 40880-21

Breaking Strength: 1,800 lbs./818 kg.
Working Load Limit : 600 lbs./272 kg.
Code: 5K
Weight: .40 lb./18 kg.

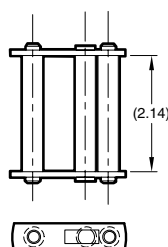


Part No. 40880-19

Breaking Strength: 2,500 lbs./1,136 kg.
Working Load Limit: 833 lbs./378 kg.
Code: 6G
Weight: .69 lb./31 kg.

Roller Buckle

A simple slide bar adjuster buckle for light-duty applications.

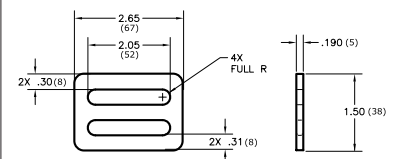


Part No. 41645-10 Roller Buckle

Breaking Strength: 1,500 lbs./681 kg.
Working Load Limit: 500 lbs./227 kg.
Code: 9T
Weight: .20 lb./10 kg.

3-Bar Slide Adjuster

This adjuster is designed to be used for adjustment of strap lengths only, not for tensioning.



Part No. 48903-10 3-Bar Slide Adjuster

Breaking Strength: 1,200 lbs./545 kg.
Working Load Limit: 400 lbs./182 kg.
Weight: .15 lb./07 kg.