

INSTALLATION GUIDE

Patent No.
 6,074,143 United States
 Other Patents Pending

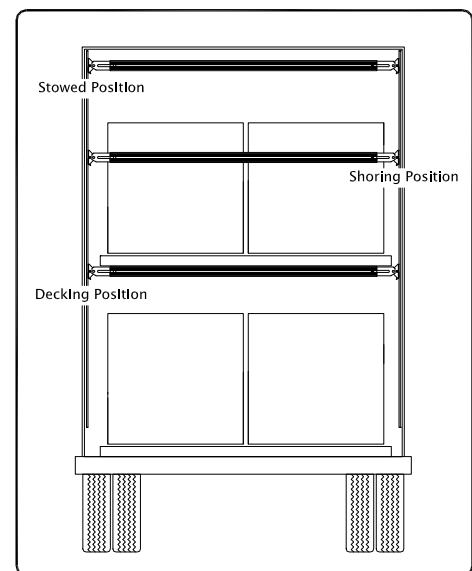
INTRODUCTION

Lift-A-Deck II is Ancra's improved solution for decking and shoring loads in trailers. The redesigned aircraft quality aluminum beam features an improved spring loaded trigger lock with simple release enabling the beams to be easily adjusted by one operator.

Lift-A-Deck II utilizes narrow aluminum low-profile "aircraft" style cargo track for great performance, and cost savings. The Ancra manufactured cargo track is designed and manufactured per Military Standard MS33601, using the same high tolerance equipment as utilized in the aircraft industry.

The LIFT-A-DECK II may be used as a decking beam to support a second level of cargo above the trailer floor, or in cargo shoring applications to ensure cargo does not shift while in transit.

- In Decking applications, the LIFT-A-DECK II beam supports a removable second deck that carries cargo above the main deck. When not in use, beams are moved up to the ceiling for easy and secure storage. No more lost beams on the loading dock!
- In Shoring applications, the LIFT-A-DECK II patented swivel foot design allows for diagonal positioning and versatile movement.



INSTALLATION GUIDE

Product Line Description

The Ancra Lift-A-Deck II comes in several configurations and styles to meet your individual needs. Contact your Ancra Customer Service Representative for ordering information.

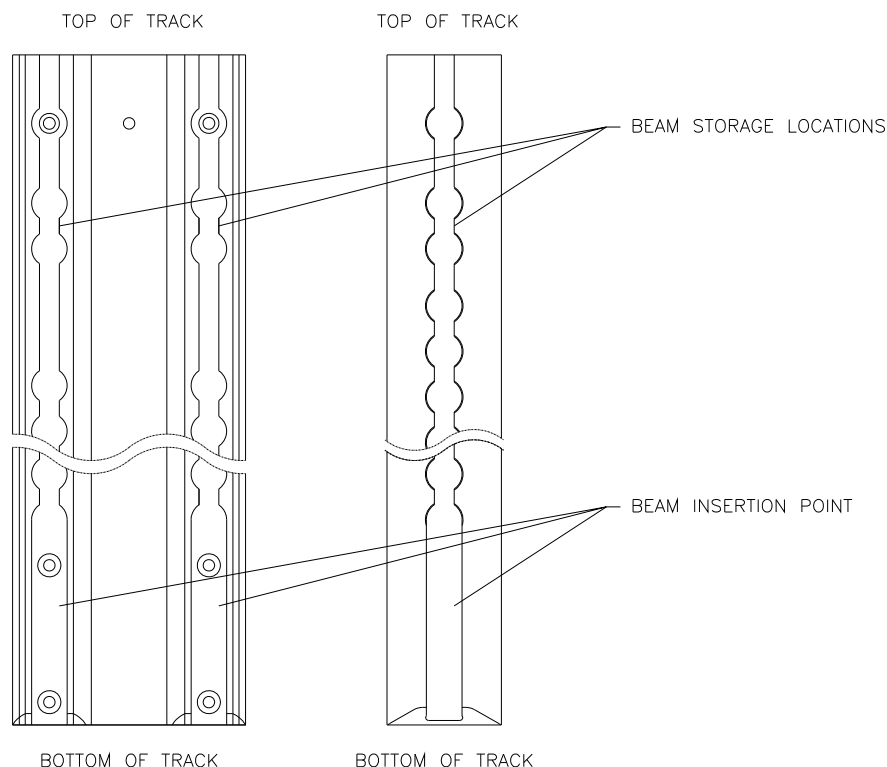


Ancra Customer Service

FAX Orders to Ancra at (800) 347-2627 or,
Telephone at (800) 233-5138

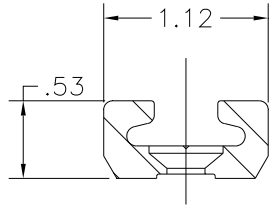
TRACK:

The Ancra Lift-A-Deck II track is manufactured to meet Military Standard MS33601 for aircraft track. Ancra's Lift-A-Deck II track comes pre-drilled and has a beam removal slot for ease in beam removal, no disassembly required! Several different profiles are available to ensure installation versatility.

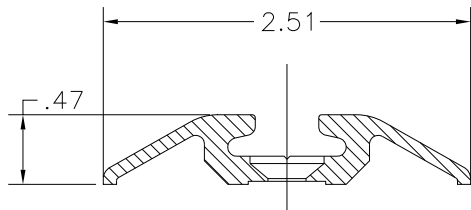


INSTALLATION GUIDE

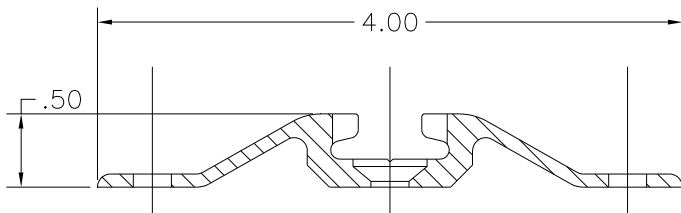
TRACK - continued:



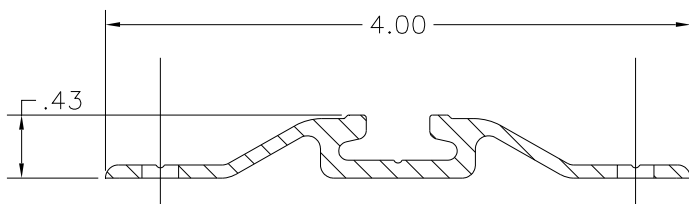
Ancra's Narrow Single Track



Ancra's Standard Single Track



Ancra's Flanged Single Track



Ancra's Contoured Single Track

Ancra's Narrow Single Track is suitable for recessed applications. This profile has mounting holes pre-drilled on 10.00" or 12.00" centers and is intended for use with 100 DEG. flush head blind rivets. See **Installing the Track** section for recommended fasteners. Standard Track is 72" long. Special track lengths and configurations are available.

Ancra's Standard Single Track is suitable for use in surface-mount applications. This profile has mounting holes pre-drilled on 10.00" or 12.00" centers and is intended for use with 100 DEG. flush head blind rivets. See **Installing the Track** section for recommended fasteners. Standard Track is 72" long. Special track lengths and configurations are available.

Ancra's Flanged Single Track is suitable for use in surface-mount applications. This profile has mounting holes pre-drilled on 10.00" or 12.00" centers and is intended for use with 100 DEG. flush head blind rivets in center holes or protruding head blind rivets or solid bucked rivets in the flanges. See **Installing the Track** section for recommended fasteners. Standard Track is 72" long. Special track lengths and configurations are available.

Ancra's Contoured Single Track is suitable for use in surface-mount applications. This profile has mounting holes pre-drilled on 10.00" or 12.00" centers and is intended for use with standard protruding head blind rivets or solid bucked rivets in the flanges. See **Installing the Track** section for recommended fasteners. Standard Track is 72" long. Special track lengths and configurations are available.

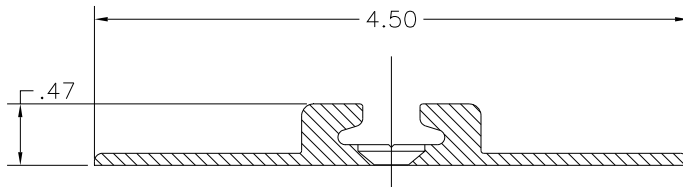
PROPRIETARY AND CONFIDENTIAL

ANCRA INTL-LLC

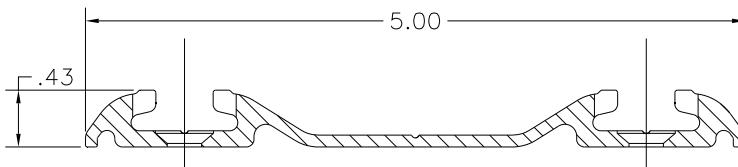
Doc. #291 Rev. E (06-15-11)

INSTALLATION GUIDE

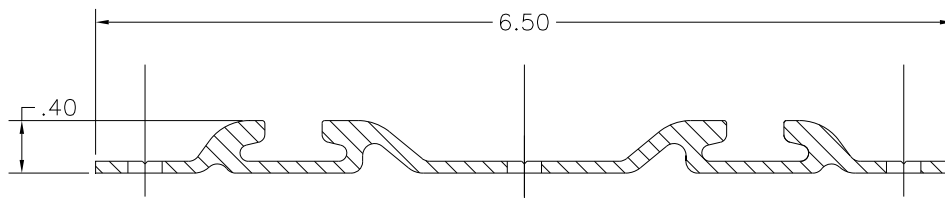
TRACK - continued:



Ancra's Flanged Narrow Single Track



Ancra's Contoured Double Track



Ancra's Flanged Double Track

Ancra's Flanged Narrow Single Track is suitable for recessed applications. This profile has mounting holes pre-drilled on 10.00" or 12.00" centers and is intended for use with 100 DEG. flush head blind rivets. See **Installing the Track** section for recommended fasteners. Standard Track is 72" long. Special track lengths and configurations are available.

Ancra's Contoured Double Track is suitable for use in surface-mount applications. This profile has mounting holes pre-drilled on 10.00" or 12.00" centers and is intended for use with 100 DEG. flush head blind rivets. See **Installing the Track** section for recommended fasteners. Standard Track is 72" long. Special track lengths and configurations are available.

Ancra's Flanged Double Track is suitable for use in surface-mount applications. This profile has mounting holes pre-drilled on 10.00" or 12.00" centers and is intended for use with standard protruding head blind rivets or solid bucked rivets in the flanges. See **Installing the Track** section for recommended fasteners. Standard Track is 72" long. Special track lengths and configurations are available.

INSTALLATION GUIDE

TRACK - continued:

PN	Nomenclature	Length (in)	Beam Storage	Beam Insert Slot	Bottom Bevel	Mounting Holes				Index Marking Possible	Notes:
						Spacing (in)	Flange	Center	Track		
49562-13-L	Narrow Single Track	72.00	No	No	No	12			X	No	
49562-15-L	Narrow Single Track	98.00	No	No	No	10			X	No	
49562-17-L	Narrow Single Track	80.00	No	Yes	No	12			X	No	
		81.00	No	Yes	No	12			X	No	
		82.00	No	Yes	No	12			X	No	
		83.00	No	Yes	No	12			X	No	
		93.00	No	Yes	No	12			X	No	
49562-18	Narrow Single Track	12.00	No	No	No	8			X	No	
49562-19	Narrow Single Track	89.00	No	Yes	No	12			X	No	
49562-30	Narrow Single Track	90.00	No	Yes	No	12			X	No	
49562-31-L	Narrow Single Track	80.00	No	Yes	No	12			X	No	
		81.00	No	Yes	No	12			X	No	
		82.00	No	Yes	No	12			X	No	
		83.00	No	Yes	No	12			X	No	
49562-42	Narrow Single Track	84.00	No	Yes	No	12			X	No	Blue Ends
49562-43	Narrow Single Track	84.00	No	Yes	No	12			X	No	Red Ends
49562-44	Narrow Single Track	76.00	Yes	Yes	No	6			X	No	
49562-45	Narrow Single Track	76.00	Yes	Yes	No	6			X	No	
49562-46	Narrow Single Track	86.00	No	Yes	No	10			X	No	
49562-47	Narrow Single Track	72.00	No	No	No	8			X	No	
49562-48	Narrow Single Track	23.50	No	No	No	8			X	No	
49562-49	Narrow Single Track	72.00	No	Yes	No	None				No	
49562-50	Narrow Single Track	72.00	No	No	No	4			X	No	
49562-51	Narrow Single Track	93.50	No	Yes	No	12			X	No	

INSTALLATION GUIDE

TRACK - continued:

PN	Nomenclature	Length (in)	Beam Storage	Beam Insert Slot	Bottom Bevel	Mounting Holes				Index Marking Possible	Notes:
						Spacing (in)	Flange	Center	Track		
49363-10-L	Standard Single Track	72.00	No	Yes	Yes	12			X	No	Anodized
		84.00	No	Yes	Yes	12			X	No	
		100.00	No	Yes	Yes	12			X	No	Anodized
49363-30-L	Standard Single Track	72.00	No	No	No	12			X	No	
		92.00	No	No	No	12			X	No	
49363-31	Standard Single Track	26.00	No	No	No	12			X	No	
50076-10-L	Standard Single Track	66.75	Yes	Yes	Yes	10			X	No	
50076-11-L	Standard Single Track	72.00	Yes	Yes	Yes	10			X	No	
50076-12-L	Standard Single Track	66.75	Yes	Yes	Yes	None			X	No	
50076-13-L	Standard Single Track	72.00	Yes	Yes	Yes	None			X	No	

INSTALLATION GUIDE

TRACK - continued:

PN	Nomenclature	Length (in)	Beam Storage	Beam Insert Slot	Bottom Bevel	Mounting Holes				Index Marking Possible	Notes:
						Spacing (in)	Flange	Center	Track		
49363-11-L	Flanged Single Track	72.00	No	Yes	No	12			X	Yes	
		93.50	No	Yes	No	12			X	No	Anodized
		100.00	No	Yes	No	12			X	No	
49363-14	Flanged Single Track	72.00	Yes	Yes	No	12	X		X	Yes	
49363-18	Flanged Single Track	4.875	Yes	No	No	Pilot	X	X		No	
49363-21-L	Flanged Single Track	62.00	No	Yes	No	10	X		X	Yes	
		64.25	No	Yes	No	10	X		X	Yes	
		68.00	No	Yes	No	10	X		X	Yes	
		69.75	No	Yes	No	10	X		X	Yes	
		84.00	No	Yes	No	10	X		X	No	
49363-23	Flanged Single Track	69.75	Yes	Yes	No	12	X		X	Yes	
49363-28	Flanged Single Track	93.00	Yes	Yes	No	None				No	
49363-32	Flanged Single Track	72.00	Yes	Yes	Yes	10	X		X	Yes	
49363-34	Flanged Single Track	69.75	Yes	Yes	Yes	10	X		X	Yes	
49363-36	Flanged Single Track	92.00	Yes	Yes	No	10	X		X	No	
49363-37	Flanged Single Track	69.75	Yes	Yes	No	10	X		X	Yes	
49363-38	Flanged Single Track	73.75	Yes	Yes	No	12	X		X	No	
49363-40-L	Flanged Single Track	72.00	Yes	Yes	Yes	None				Yes	
		91.00	Yes	Yes	Yes	None				No	
49363-46	Flanged Single Track	84.00	Yes	Yes	No	12	X		X	No	
49363-47	Flanged Single Track	94.00	Yes	Yes	Yes	10	X		X	No	
50058-10	Flanged Single Track	84.00	Yes	Yes	Yes	10	X		X	No	
50058-11	Flanged Single Track	80.25	Yes	Yes	Yes	10	X		X	No	
50058-12	Flanged Single Track	67.50	Yes	Yes	Yes	10	X		X	Yes	
50058-13	Flanged Single Track	91.00	Yes	Yes	Yes	10	X			No	
50059-10	Flanged Single Track	90.50	Yes	Yes	No	10	X		X	No	Anodized
50059-11	Flanged Single Track	67.50	Yes	Yes	No	10	X		X	Yes	
50059-12	Flanged Single Track	92.50	Yes	Yes	No	10	X		X	No	Anodized
50059-13	Flanged Single Track	80.00	Yes	Yes	No	12	X		X	No	
50059-14	Flanged Single Track	82.00	Yes	Yes	No	12	X		X	No	Anodized
50059-15	Flanged Single Track	72.00	Yes	Yes	No	10	X		X	Yes	
50059-16	Flanged Single Track	69.75	Yes	Yes	No	10	X		X	Yes	Anodized

INSTALLATION GUIDE

TRACK - continued:

PN	Nomenclature	Length (in)	Beam Storage	Beam Insert Slot	Bottom Bevel	Mounting Holes				Index Marking Possible	Notes:
						Spacing (in)	Flange	Center	Track		
49363-42	Contoured Single Track	72.00	Yes	Yes	Yes	10	X			Yes	
49363-43	Contoured Single Track	66.75	Yes	Yes	Yes	10	X			Yes	

PN	Nomenclature	Length (in)	Beam Storage	Beam Insert Slot	Bottom Bevel	Mounting Holes				Index Marking Possible	Notes:
						Spacing (in)	Flange	Center	Track		
49363-12-L	Flanged Narrow Single Track	96.00	No	Yes	No	12			X	No	Anodized

PN	Nomenclature	Length (in)	Beam Storage	Beam Insert Slot	Bottom Bevel	Mounting Holes				Index Marking Possible	Notes:
						Spacing (in)	Flange	Center	Track		
49363-44	Contoured Double Track	72.00	Yes	Yes	Yes	10			X	Yes	
49363-45	Contoured Double Track	66.75	Yes	Yes	Yes	10			X	Yes	

INSTALLATION GUIDE

TRACK - continued:

PN	Nomenclature	Length (in)	Beam Storage	Beam Insert Slot	Bottom Bevel	Mounting Holes				Index Marking Possible	Notes:
						Spacing (in)	Flange	Center	Track		
49363-15	Flanged Double Track	72.00	Yes	Yes	No	12	X	X		Yes	
49363-19	Flanged Double Track	4.875	Yes	No	No	Pilot		X		No	
49363-22-L	Flanged Double Track	64.25	No	Yes	No	10	X	X		Yes	
		68.00	No	Yes	No	10	X	X		Yes	
49363-26	Flanged Double Track	69.75	Yes	Yes	No	12	X	X		No	
49363-29	Flanged Double Track	93.00	Yes	Yes	No	None				Yes	
49363-33	Flanged Double Track	72.00	Yes	Yes	Yes	10	X	X		Yes	
49363-35	Flanged Double Track	69.75	Yes	Yes	Yes	10	X	X		Yes	
49363-41-L	Flanged Double Track	72.00	Yes	Yes	Yes	None				Yes	
49363-48	Flanged Double Track	94.00	Yes	Yes	Yes	10	X	X		No	
50072-10	Flanged Double Track	67.50	Yes	Yes	Yes	10	X	X		Yes	
50073-10	Flanged Double Track	67.50	Yes	Yes	No	10	X	X		Yes	
50073-11	Flanged Double Track	84.00	Yes	Yes	No	12	X	X		No	
50073-12	Flanged Double Track	92.50	Yes	Yes	No	10	X	X		No	

DOOR GUARD 50030-12-120:

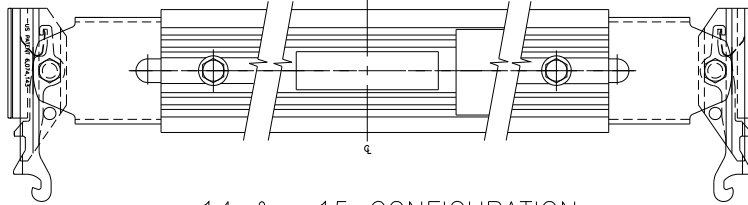
The Door Guard is a 10' long angle used to prevent damage to roll up door track and door when sliding the beams up into the storage position.



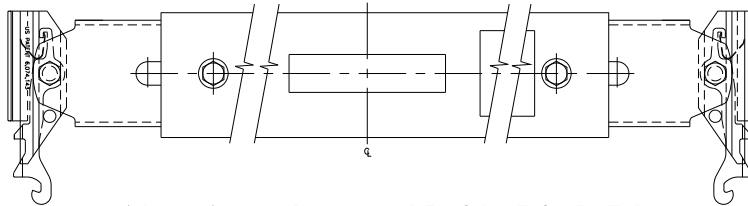
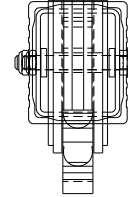
INSTALLATION GUIDE

BEAM ASSEMBLIES:

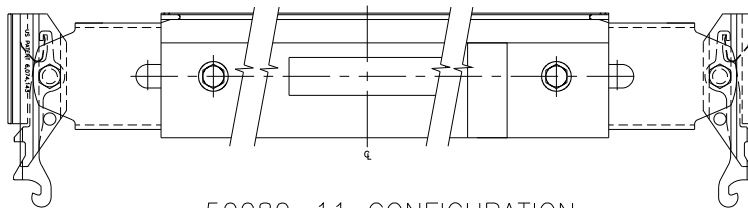
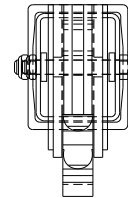
Ancra's LIFT-A-DECK II Beams are constructed of high strength aluminum and are available in two standard size ranges to effectively cover the standard 96" and 102" trailer widths. Each beam has been designed with sliding and rotating feet assemblies to allow ease of motion in the track.



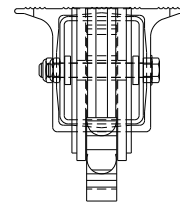
-14 & -15 CONFIGURATION



-18, -19, -24 & -25 CONFIGURATION



50080-11 CONFIGURATION



Part Number	Duty Type	Adjustment Range
49414 -14	Standard Duty	87.9" – 98.3"
49414 -15	Standard Duty	95.6" – 105.5"
49414 -18	Heavy Duty	87.9" – 98.3"
49414 -19	Heavy Duty	95.6" – 105.5"
49414 -24	Heavy Duty	95.6" – 105.5"
49414 -25	Heavy Duty	92.6" – 103.0"
50080 -11	Wide, Heavy Duty	95.6" – 105.5"

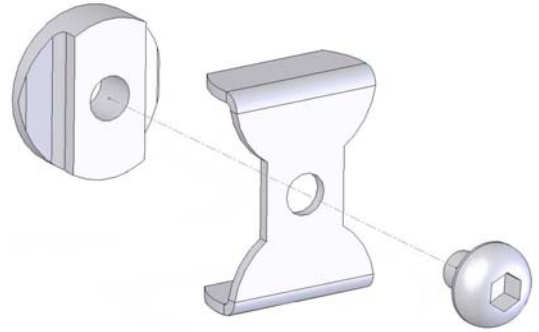
INSTALLATION GUIDE

TRACK STOPS, 49384-12:

The Track Stop inserts snugly into bottom of track above the beam removal slot. See installation for location.

Warning: Personal Injury May Occur

DO NOT USE BEAMS without Track Stop in place. If Track Stop is damaged or missing, contact Ancra's Customer Service for replacement.



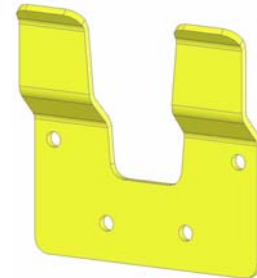
ADJUSTMENT BAR, 49445-11:

The Adjustment Bar is used to operate each beam up and down the track and release it from its storage location.



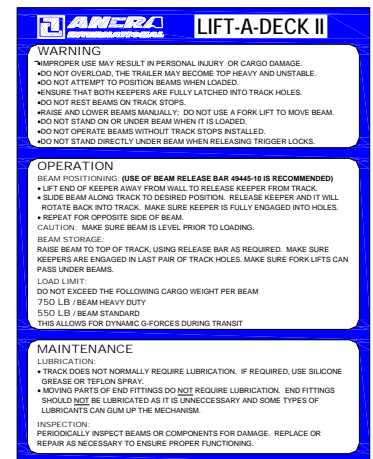
ADJUSTMENT BAR HOLDER, 50055-10:

The Adjustment Bar Holder is used to store the Adjustment Bar when not in use.



OPERATION AND WARNING DECAL, 49438-13:

Each Ancra LIFT-A-DECK II System in service should have an Operation and Warning decal applied to the inside of the trailer. The location of the Decal should be in an area where the operator can easily reference the instructions. DO NOT operate, or place into service, your LIFT-A-DECK II System without this decal in place. If your LIFT-A-DECK II System is missing this Decal or, if your Decal has become unreadable, please contact Ancra Customer Service for replacement.

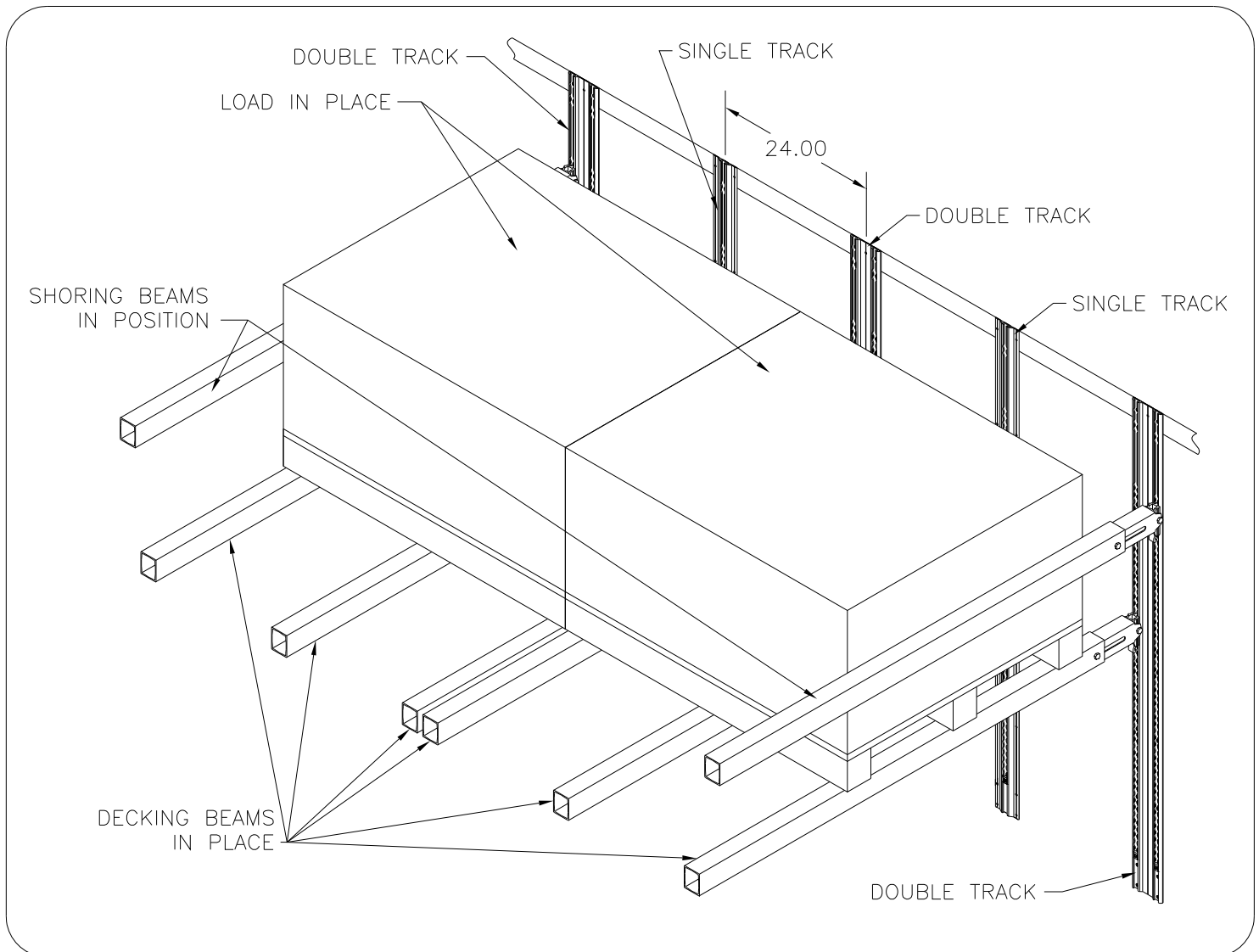


INSTALLATION GUIDE

INSTALLATION – DETERMINE THE LAYOUT – 24” POST SPACING

Pallet sizes and trailer manufacture configurations differ greatly in the industry. It is important to take these conditions into consideration when laying out your system. When installing your system, you must ensure structural integrity by attaching system track to vertical posts of the trailer or, through the walls in plate trailers. Each LIFT-A-DECK II Track comes predrilled. Use fasteners at every mounting hole location. For the most versatility in cargo configurations, Ancra recommends installing Track at each vertical post location.

For trailers with 24" post spacing, alternate the single and double tracks as shown in the following illustration.

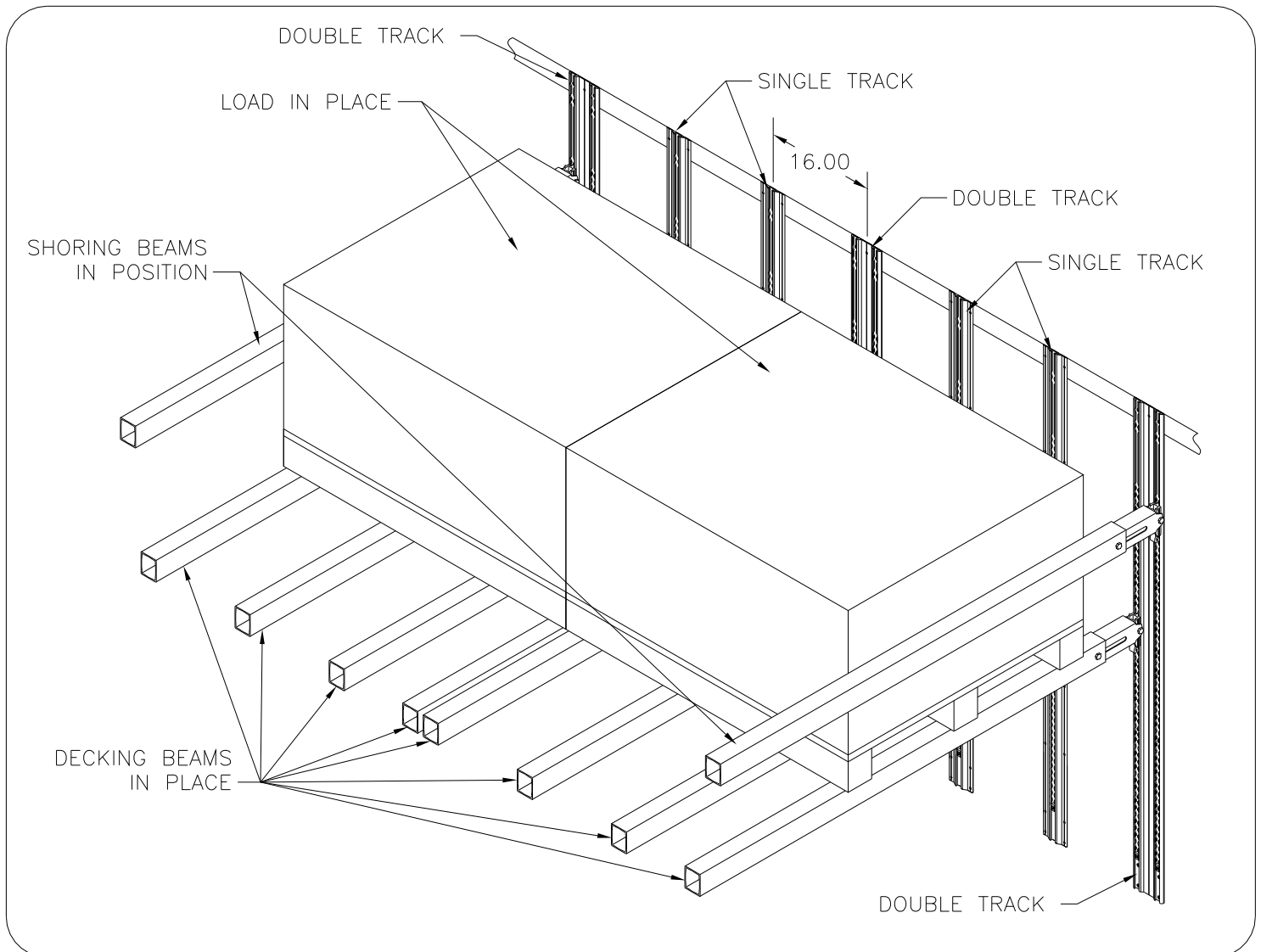


INSTALLATION GUIDE

INSTALLATION – DETERMINE THE LAYOUT – 16” POST SPACING

Pallet sizes and trailer manufacture configurations differ greatly in the industry. It is important to take these conditions into consideration when laying out your system. When installing your system, you must ensure structural integrity by attaching system track to vertical posts of the trailer or, through the walls in plate trailers. Each LIFT-A-DECK II Track comes predrilled. Use fasteners at every mounting hole location. For the most versatility in cargo configurations, Ancra recommends installing Track at each vertical post location.

For trailers with 16” post spacing use double track on every third post as shown in the following illustration.



INSTALLATION GUIDE

INSTALLING THE TRACK

Once you have determined your layout, it is time to select your fasteners. Use the following table as a guide (commercial equivalents are acceptable as long as the shear and tensile strength is maintained).

Recommended Fasteners (customer supplied)

Track Configuration	Fastener Type	Commercial Fasteners
49562-13-72.00	100° Flush Head	Huck MGL-100-R8-8*
49363-10-72.00	100° Flush Head	Huck MGL-100-R8-8*
49363-14	100° Flush Head**	Huck MGL-100-R8-8*
49363-15	Protruding Head**	Huck MGLP-R8-10*

*Length of rivet needs to be determined by the track thickness and post or plate thickness.

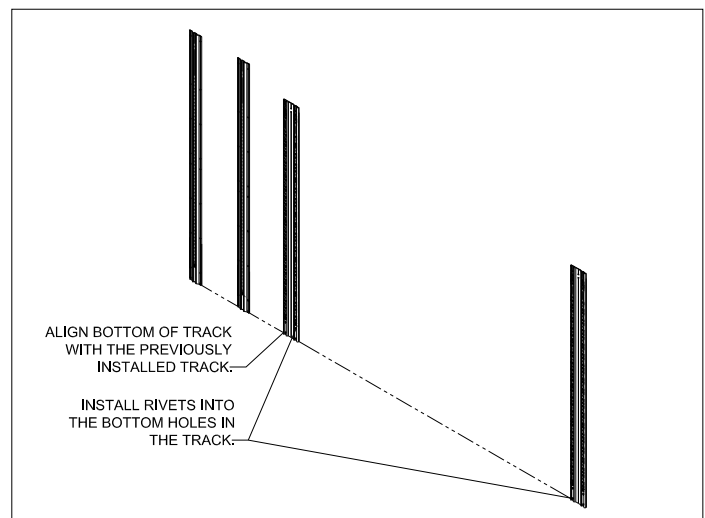
**The holes in the flange may be used to mount the track using solid bucked rivets.

1. To install the track, place the top end of the track, butted against top flange of upper rail, over the centerline of the vertical post. Be sure the Beam Installation/Removal Slot is located at the bottom of track.
2. Transfer drill holes through trailer support post or plate wall and attach track to post through wall, at each end of track (top and bottom) using selected fasteners.
3. Continue installation by transfer drilling and installing fasteners to remaining mounting hole locations within the tracks.
4. Repeat process for other side of trailer.

INSTALLING THE DOOR GUARD (FOR ROLL-UP DOOR TRAILERS ONLY)

1. To install the Door Guard align the bottom of the first and last short double row track*** with the previously installed pieces. Insert rivets into both bottom holes of the track.

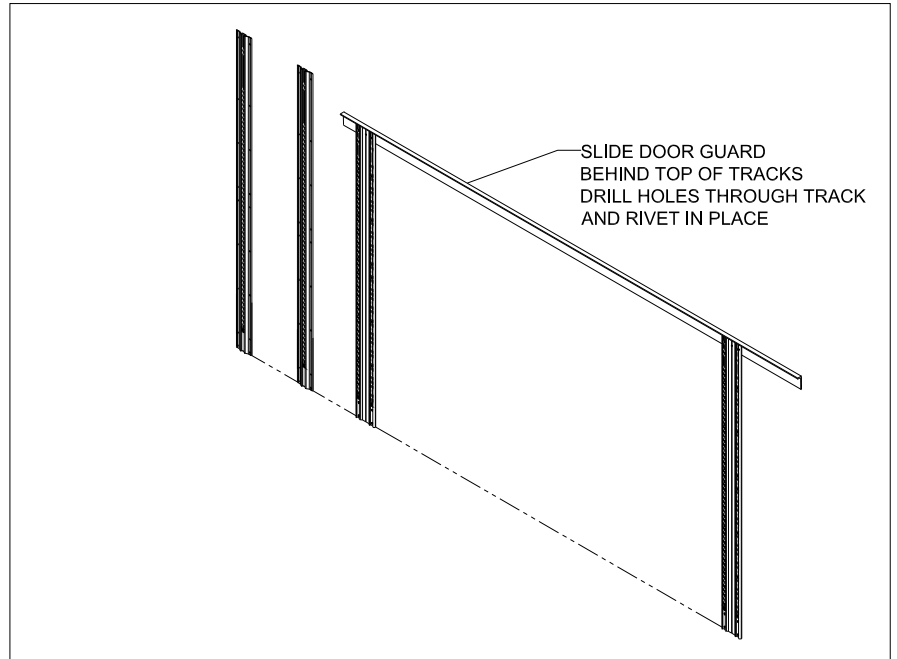
*** In the roll-up door area, shorter lengths of track must be used. The single row flanged track is 49363-23 (69.75" long) and the double row flanged track is 49363-26 (69.75" long).



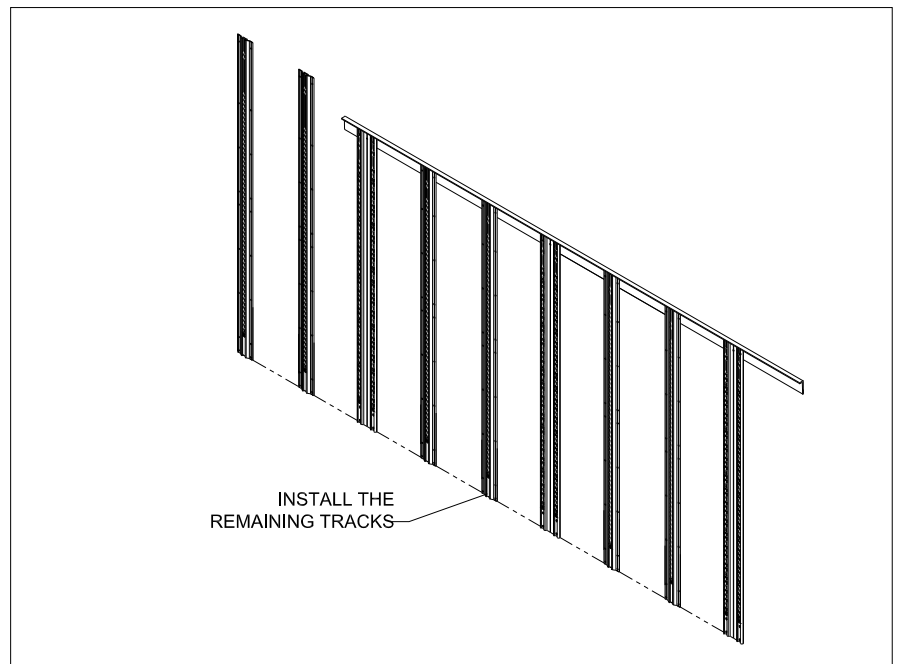
INSTALLATION GUIDE

INSTALLING THE DOOR GUARD – *continued*

- Slide the door guard behind the top of the tracks. Ensure the door guard is level and drill through all upper-machined holes in the track through the door guard and trailer posts and rivet the door guard in place.
- Drill and install selected fasteners in remaining mounting holes in track.



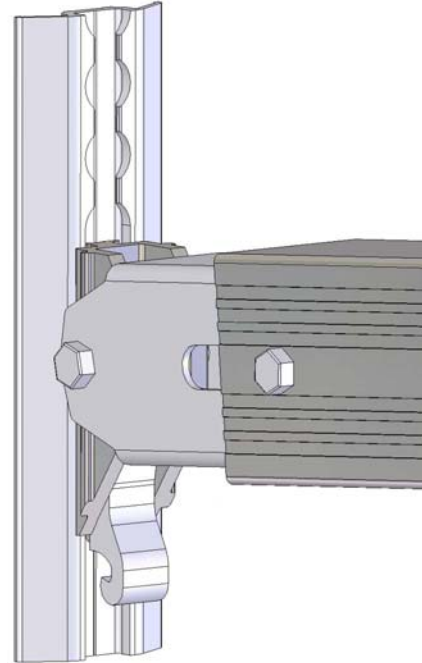
- Install the rest of the short track using the door guard as a guide. Align each piece of track with the centerline of each post and, butted up against the door guard. Drill through the machined holes in the track, through the door guard and into trailer posts and install selected fasteners.



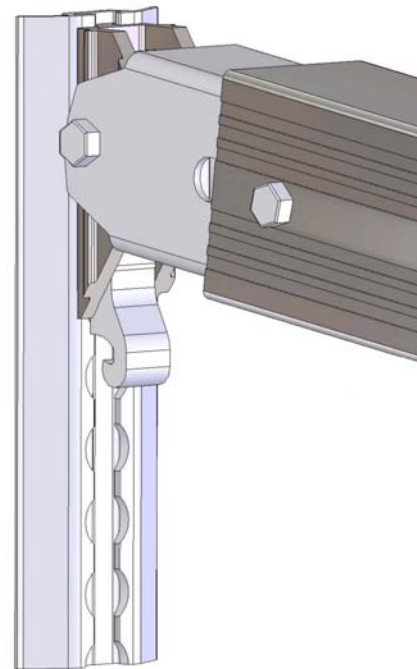
INSTALLATION GUIDE

INSTALLING THE BEAMS

1. To install beams, slide foot assembly into the beam installation/removal slot (bottom end of track) at each side of the trailer.



2. Push up on beams until fully engaged in track holes. Beams should ratchet up when pushed upward. Push beams up to top "storage holes" in track.



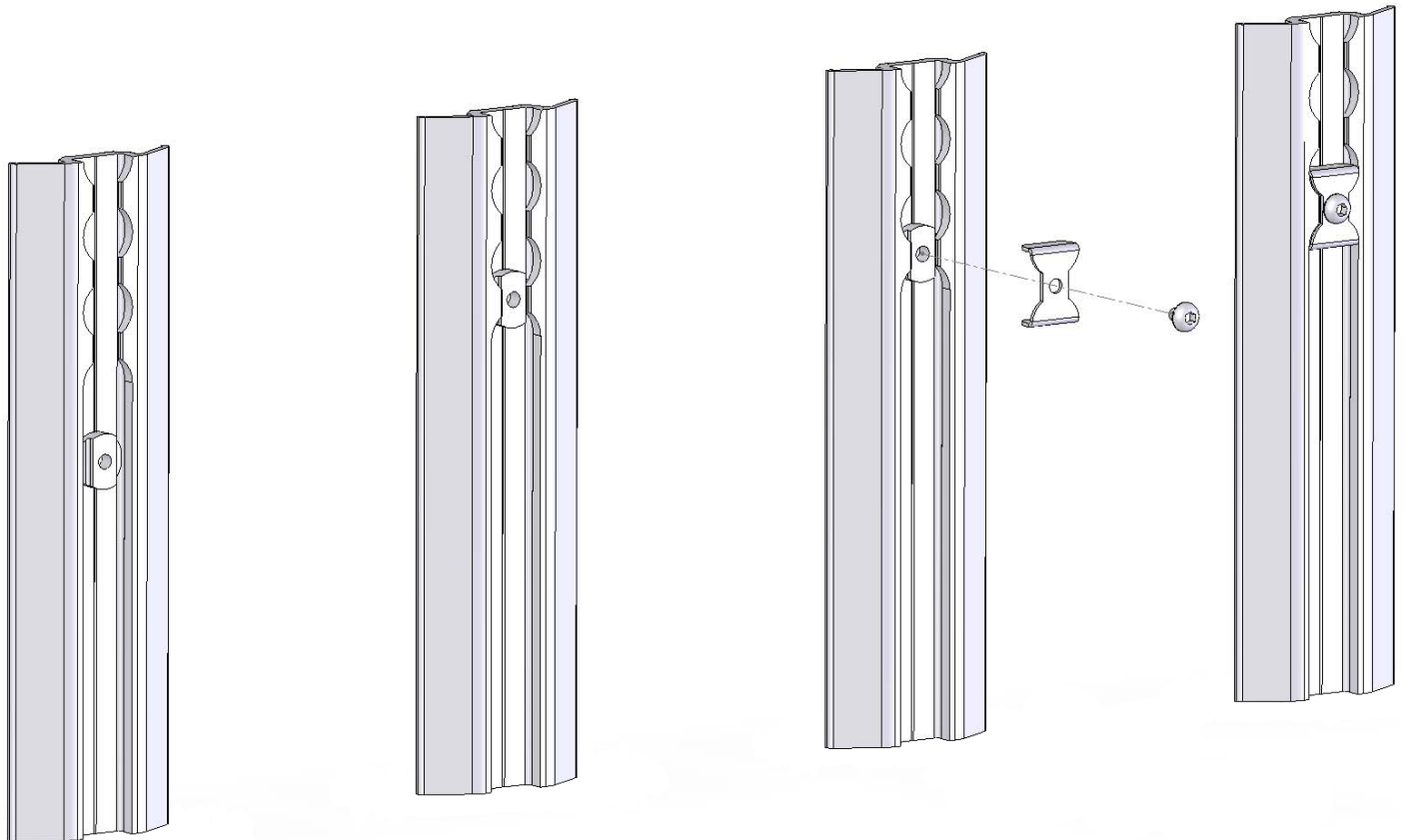
INSTALLATION GUIDE

INSTALLING BEAM STOPS

Place beam stops into track, above the installation/removal slot as shown below. Using a 5/32" Allen Wrench, seat screw and tighten an additional quarter turn. Torque beam stop screws to a maximum of 20-25 in-lbs.

DO NOT OVERTORQUE THE SMALL BEAM STOP SCREWS.

WARNING: DO NOT OPERATE LAD II SYSTEM UNTIL ALL BEAM STOPS ARE IN PLACE.



INSTALLATION GUIDE

OPERATION GUIDELINES

Beam Positioning:

1. Lift end of trigger lock away from wall to release trigger lock from track.
2. Slide beam along track to desired position. Release trigger lock and it will rotate back into track. Make sure trigger lock is fully engaged into track holes.
3. Repeat for opposite side of beam.

CAUTION: Make sure beam is level prior to loading.

Beam Storage:

1. Raise beam to top of track, using beam release bar as required. Make sure trigger locks are engaged in last pair of track holes.

Load Limit:

1. DECKING: Do not exceed the following weight per beam to allow for dynamic G-Forces:
1,000 lbs - Wide, Heavy Duty Beam
750 lbs - Heavy Duty Beam
550 lbs - Standard Duty Beam
2. SHORING: **2,500 lbs** Working Load Limit per Heavy Duty Beam.
2,200 lbs Working Load Limit per Standard Beam.

WARNING

1. Improper use may result in personal injury or cargo damage.
2. Do not overload, the trailer may become top heavy and unstable.
3. Do not attempt to position beams when loaded.
4. Ensure that both trigger locks are fully latched into track holes.
5. Do not rest beams on track stops.
6. Raise and lower beams manually; do not use a forklift to move the beam.
7. See 49468-13 operation and warning decal for additional information.

INSTALLATION GUIDE

MAINTENANCE

Lubrication:

1. Track does not normally require lubrication. Use silicone grease or Teflon spray as required.
2. Moving parts of end fittings do **not** require lubrication. End fittings should **not** be lubricated as it is unnecessary and some types of lubricants can gum up the mechanism.

Inspection:

Periodically inspect beams, tracks or components for damage and excessive wear. If excessive wear is noted, replace or repair as necessary to ensure proper functioning.

Do Not load the beam if you find any of the following:

1. Missing Track flange teeth
2. Trigger lock does not spring back and set into track
3. Warped or bent decking beams
4. Missing or improper track fasteners
5. There is other damage present that makes you unsure of structural integrity.