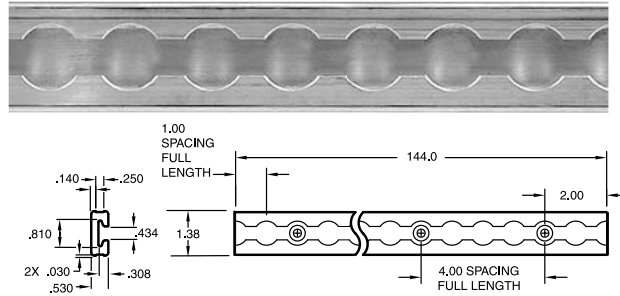




## Aircraft Style Seat/Logistic Track

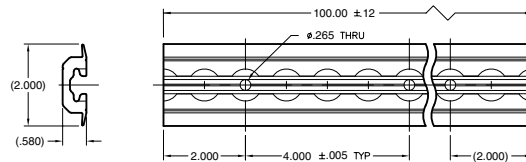


**Part No. 40467-33-144** 12' long  
Weight: 6.30 lbs./2.86 kg.

Single Stud/Vertical  
Breaking Strength: 4,000 lbs./1,818 kg.  
Working Load Limit: 1,333 lbs./605 kg.

Double Stud/Vertical  
Breaking Strength: 8,500 lbs./3,863 kg.  
Working Load Limit: 2,833 lbs./1,287 kg.

## Heavy-Duty Flanged Track

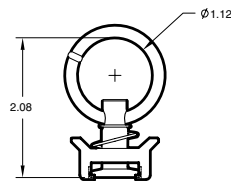


**Part No. 48967-12** 100" long  
Weight: 5.60 lbs./2.55 kg.

Single Stud/Vertical  
Breaking Strength: 6,000 lbs./2,727 kg.  
Working Load Limit: 2,000 lbs./909 kg.

Double Stud/Vertical  
Breaking Strength: 10,000 lbs./4,545 kg.  
Working Load Limit: 3,333 lbs./1,515 kg.

## Single Stud Track Fitting

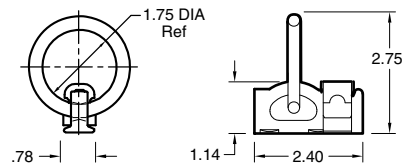


### Part No. 40340-27

Breaking Strength: 4,000 lbs./1,818 kg.\*  
Working Load Limit: 1,333 lbs./605 kg.  
Code: CE  
Weight: .09 lb./0.04 kg.

\*Load rating varies with the angle of pull.

## Double Stud Track Fitting with Round Ring



### Part No. 47556-11

Breaking Strength: 5,000 lbs./2,272 kg.  
Working Load Limit: 1,666 lbs./757 kg.  
Code: 5V  
Weight: .35 lb./0.16 kg.

Ankra designs and manufactures a full spectrum of restraints and hardware to meet your wide-ranging needs. Our specialty items represent our ongoing mission to provide the right solutions for a changing industry. If you can't find a specific product in this catalog, or if you have a particular requirement that calls for a unique solution, give us a call. Our customization capabilities can be your assurance that you have Ankra quality for all your cargo restraint applications.

