



The world's first ratcheting winch saves time and helps prevent injury.

With Ankra's SilverCap™ Ratcheting Winch, you don't have to remove the winch bar until the load is secure. That can save you time while preventing winch bar slippage or kick-back. Functioning just like a ratchet wrench, the SilverCap is one of those ideas that makes perfect sense, and you wonder why someone didn't think of it sooner. Like other Ankra winches which are some of the strongest in the industry, these new patented winches have a working load limit of 6,000 lbs. and a breaking strength of at least 18,000 lbs. unless otherwise indicated. They comply with all DOT and California CHP regulations, WSTDA-T3 and Canadian Standard 905.

Silver Cap Winches are available in weld-on, sliding or portable mount models and are all powder coated to resist abrasion and rust. For longevity, the ratcheting mechanism is permanently sealed against moisture and road grime.



SilverCap™ Winches Side Mount



Unless otherwise specified, all winches shown are right hand models. Left hand models are available on special order.



Low Profile Portable w/2SS
Part No. 43564-16-RC
Weight: 11.5 lbs./5.2 kg.
WLL: 6,000 lbs.



Low Profile
Part No. 43579-20-RC
Weight: 9.8 lbs./4.4 kg.
WLL: 6,000 lbs.



3-Bar Low Profile Side Mount
Part No. 48101-10-SG-RC
Silver Zinc Plating
Weight: 14.5 lbs./6.6 kg.
WLL: 6,000 lbs.



3-Bar Standard Bottom Mount
Part No. 48101-14-SG-RC
Silver Zinc Plating
Weight: 15.9 lbs./7.2 kg.
WLL: 6,000 lbs.

Winch Information

3-Bar

Designed for easy strap insertion during snow and ice conditions. Prevents the mandrel from freezing up.

Portable

Winches can be placed anywhere along the trailer side channel.

Spool

Designed to reduce strap wear, spool discs guide and store the webbing into a single roll up to 30'.

Standard Double Cap

Incremental adjustment from both sides of the winch allows for low clearance applications.

Sliders

Allow for easy positioning in the track, but lock into place when tension is applied to the strap. Can also be welded for fixed application. For use with Ankra track 42357-11, 42357-21, 49242-10-120 or equivalent.

Bottom Mount



Standard
Part No. 43563-10-RC
Weight: 10.6 lbs./4.8 kg.
WLL: 6,000 lbs.



Standard Storage
Part No. 43573-10-RC
Weight: 11.2 lbs./5.1 kg.
WLL: 6,000 lbs.



Standard Storage Portable w/ 2SS
Part No. 43564-12-RC
Weight: 12.4 lbs./5.6 kg.
WLL: 6,000 lbs.



Standard Portable w/ 2SS
Part No. 43564-14-RC
Weight: 12.0 lbs./5.4 kg.
WLL: 6,000 lbs.



Standard Storage 2" Spool
Part No. 43573-11-RC
Weight: 11.7 lbs./5.3 kg.
WLL: 6,000 lbs.



Standard Storage 3" Spool
Part No. 43573-12-RC
Weight: 11.7 lbs./5.3 kg.
WLL: 6,000 lbs.



Standard Storage 4" Spool
Part No. 43573-13-RC
Weight: 13.7 lbs./6.2 kg.
WLL: 6,000 lbs.





SilverCap™ Winches

SilverCap™
The World's First Ratcheting Winch

PATENTED

Sliders



Storable Double L Track

Part No. 49207-12-RC
Weight: 10.8 lbs./4.9 kg.
WLL: 5,000 lbs.



Standard Double L Track

Part No. 49207-13-RC
Weight: 10.0 lbs./4.5 kg.
WLL: 5,000 lbs.



Low Profile Double L Track

Part No. 49207-18-RC
Weight: 10.5 lbs./4.8 kg.
WLL: 5,000 lbs.



Deep Storage Bottom Mount C Track

Part No. 43565-12-RC
Weight: 12.2 lbs./5.5 kg.
WLL: 6,000 lbs.



Standard Bottom Mount C Track

Part No. 43565-15-RC
Weight: 11.5 lbs./5.2 kg.
WLL: 6,000 lbs.

Combination



Leg Bracket Low Profile

Part No. 43997-10-RC
Weight: 9.4 lbs./4.3 kg.
WLL: 5,500 lbs.



Bottom Mount Standard

Part No. 41681-10-RC
Weight: 11.9 lbs./5.4 kg.
WLL: 6,000 lbs.



Side Mount Low Profile

Part No. 43488-20-RC
Weight: 11.8 lbs./5.4 kg.
WLL: 6,000 lbs.

Part No. 43565-14-RC w/ Side Washers

Weight: 12.6 lbs./5.7 kg.
WLL: 6,000 lbs.

Grime Guard



SilverCap winches come with a protective neoprene rubber sleeve that offers extra protection against moisture and dirt entering the ratcheting mechanism.

SilverCap™ OverDrive™ Ratcheting Cap



Simple 1, 2, 3 installation.



SilverCap™
OverDrive™ Turns Any Winch Into A Ratcheting Winch

PATENTED

Ankra's Overdrive™ is the easy upgrade for welded-on winches and winches too new to replace. With a ratcheting winch, you work faster and safer because the winch bar stays in the winch until the strap is tight.

To install on any existing winch:

1. Simply slide the OverDrive unit over the cap of the old winch,
2. Spin it in place and
3. Secure it with the bolt.

It's that simple. All necessary parts are included.

Part No. 49723-10

Weight: 3.45 lbs./1.56 kg.



Strongest in the Industry –

When load securement is vital in your flatbed fleet, you can depend on Ankra winches, now the strongest in the industry. Ankra winches meet a minimum breaking strength of 18,000 lbs. and working load limit of 6,000 lbs. unless otherwise indicated. They comply with all DOT and California CHP regulations. They also comply with WSTDA-T3 and meet Canadian Standard 905. Made with different base configurations to suit your various load requirements for flatbed applications, Ankra winches also feature seamless solid-steel mandrels, high-strength alloy pawl pins and powder coatings to resist abrasion and rust.



Unless otherwise specified, all winches shown are right hand models. Left hand models are available on special order.

Web Winches

Side Mount



Low Profile Portable w/ 2SS

Part No. 43564-16

Weight: 10.1 lbs./4.6 kg.
WLL: 6,000 lbs.



Low Profile

Part No. 43579-20

Weight: 8.6 lbs./3.9 kg.
WLL: 6,000 lbs.



Leg Bracket

Part No. 41691-10

Weight: 6.3 lbs./2.9 kg.
WLL: 5,500 lbs.

3-Bar



3-Bar Low Profile Side Mount

Part No. 48101-10

Weight: 13.3 lbs./6.0 kg.
WLL: 6,000 lbs.



3-Bar Standard Bottom Mount

Part No. 48101-14

Weight: 14.6 lbs./6.6 kg.
WLL: 6,000 lbs.

Bottom Mount



Standard

Part No. 43563-10

Weight: 9.1 lbs./4.1 kg.
WLL: 6,000 lbs.



Standard Storage

Part No. 43573-10

Weight: 9.9 lbs./4.5 kg.
WLL: 6,000 lbs.



Standard Storage Portable w/ 2SS

Part No. 43564-12

Weight: 11.1 lbs./5.0 kg.
WLL: 6,000 lbs.



Standard Portable w/ 2SS

Part No. 43564-14

Weight: 10.7 lbs./4.9 kg.
WLL: 6,000 lbs.



Standard Storage 2" Spool

Part No. 43573-11

Weight: 10.4 lbs./4.7 kg.
WLL: 6,000 lbs.



Standard Storage 3" Spool

Part No. 43573-12

Weight: 10.5 lbs./4.77 kg.
WLL: 6,000 lbs.



Standard Storage 4" Spool

Part No. 43573-13

Weight: 12.4 lbs./5.6 kg.
WLL: 6,000 lbs.



Standard Double Cap

Part No. 48783-10

Weight: 10.2 lbs./4.6 kg.
WLL: 6,000 lbs.



To maintain good operating condition, all moving parts require periodic inspection, cleaning and lubrication.



Sliders Ancra's movable winches for versatile, dependable securement.



Deep Storage Bottom Mount

Part No. 43565-12

Weight: 11.4 lbs./5.4 kg.

WLL: 6,000 lbs.



Standard Double Cap

Part No. 43565-13

Weight: 11.4 lbs./5.4 kg.

WLL: 6,000 lbs.



Deep Storage w/ Side Washers C Track

Part No. 43565-14

Weight: 11.8 lbs./5.4 kg.

WLL: 6,000 lbs.



Standard Bottom Mount C Track

Part No. 43565-15

Weight: 10.3 lbs./4.7 kg.

WLL: 6,000 lbs.



Storable Double L Track

Part No. 49207-12

Weight: 9.5 lbs./4.3 kg.

WLL: 5,000 lbs.

Part No. 49207-19

3-Bar w/ Side Washers

Weight: 9.9 lbs./4.5 kg.

WLL: 5,000 lbs.



Standard Double L Track

Part No. 49207-13

Weight: 8.1 lbs./3.7 kg.

WLL: 5,000 lbs.



Low Profile Double L Track

Part No. 49207-18

Weight: 9.3 lbs./4.2 kg.

WLL: 5,000 lbs.



Standard Slider W Track

Part No. 49706-10

Weight: 14.7 lbs./6.7 kg.

WLL: 6,000 lbs.



Low Profile Slider W Track

Part No. 49706-11

Weight: 13.4 lbs./6.1 kg.

WLL: 6,000 lbs.

Winch Track

Ancra winch track is available in two distinct styles. Our Standard C track (42357) is available in both steel and aluminum and is designed for use with our standard slider winches (43565-12 and 43565-15). Our newest style (49242-10-120) is our Double L aluminum track and is designed for our 49207 Double L slider winch models. Steel track is constructed of roll-formed 1/4" plate steel. Aluminum track is available for aluminum trailers. Custom lengths are available upon request. Winch track should be installed to meet the testing requirements of TTMA RP No. 47-03. For installation instructions, visit our web site www.ancra.com/truck/pdfs/winch_track_instl.pdf.

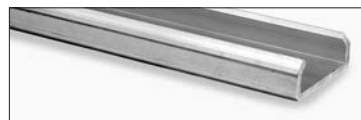


Steel C Track

Part No. 42357-11

Weight: 39.0 lbs./17.73 kg.

Length: 6'



Aluminum C Track

Part No. 42357-21

Weight: 19.0 lbs./8.64 kg.

Length: 6'



Aluminum Double L Track

Part No. 49242-10-120

Weight: 17.0 lbs./7.73 kg.

Length: 10'

Lashing Winches

The lashing winch with double hex drive can be bolted or welded to the trailer like that of a standard, yet offers the quick release and easy operation of a ratchet buckle.



Part No. 47640-30 with double hex drive

Weight: 3.9 lbs./1.8 kg.

Breaking Strength Capacity: 11,000 lbs./5,000 kg.

Working Load Limit: 3,666 lbs./1,666 kg.



Combination Winches

Ankra winches are made in a variety of configurations to fit any application that requires cable or up to 4" strap.



Standard Bottom Mount

Part No. 41681-10

Weight: 10.6 lbs./4.8 kg.
WLL: 6,000 lbs.



Low Profile Side Mount

Part No. 43488-20

Weight: 10.9 lbs./4.9 kg.
WLL: 6,000 lbs.



Recessed Box

Part No. 43908-10

Weight: 12.9 lbs./5.9 kg.

WLL: 5,500 lbs.



Low Profile Leg Bracket

Part No. 43997-10

Weight: 8.7 lbs./3.9 kg.

WLL: 5,500 lbs.



2" Web

Part No. 44466-10

Weight: 9.4 lbs./4.3 kg.

WLL: 6,000 lbs.

Cable Winches

For cable applications, Ankra offers these popular models. Your cable selection must be consistent with your cable manufacturer's safe working load ratings.

End Mount



Part No. 41696-10

End Mount RH

Weight: 15.4 lbs./7.0 kg.

WLL: 5,500 lbs.

Part No. 41696-11

End Mount LH

Weight: 15.4 lbs./7.0 kg.

WLL: 5,500 lbs.

Cable Leg Bracket



Part 41691-12

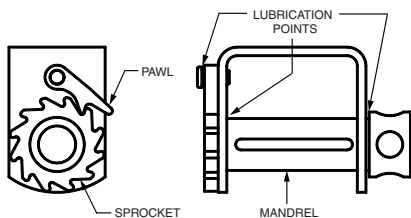
Weight: 6.5 lbs./2.9 kg.

WLL: 5,500 lbs.

Ankra designs and manufactures all types of specialty winches to meet your special applications.

Call us with your special requirements.

Winch Maintenance



Though winches don't actually come in contact with the load, their function of tightening and anchoring the webbing or cable is critical to the safety of over-the-highway cargo hauling. With their versatility, winches and straps or cable can

secure nearly every kind and shape of load, and even allow periodic tightening of the load as necessary. They operate in all types of extreme weather and rarely fail. Yet in spite of their importance, winches are often neglected and abused.

To give the winches the care they deserve, a quick inspection before each use will insure they are undamaged and working properly. Damaged or non-operational winches should be replaced immediately.

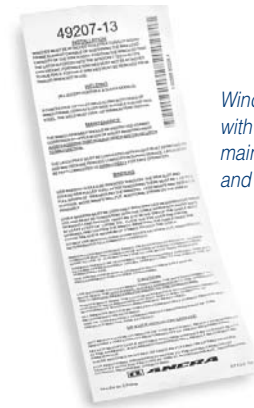
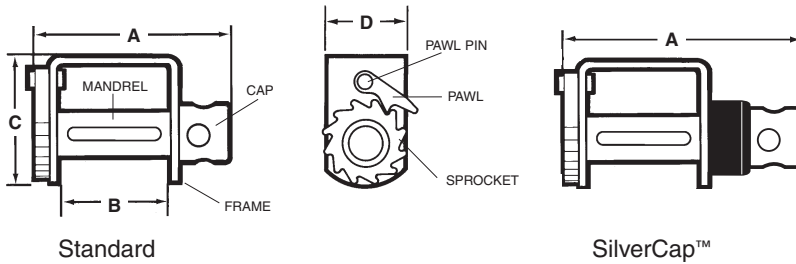
For optimum performance, winches should be cleaned to remove dirt, mud, road salt, and ice. Lubrication ensures that gravity will allow the winch pawl to drop freely into the sprocket teeth, and the sprocket will rotate freely. When not in use, portable winches should be cleaned and stored in a dry location. With a little care, your winches will go a long way.

WINCH FEATURES



- Winches are permanently marked with working load limit and our name to certify quality.
- Smooth ground web slots prevent web wear.
- All surfaces are mechanically cleaned, blasted, dipped in an alkaline bath and rinsed. The powder coating on Ankra winches withstands 250 hours of standard salt spray testing to ensure years of service.





Winches are labeled with installation, maintenance and use instructions.

Winch Dimensions (inches)

Ankra Part No.	A Overall Width	B Spool Width	C Frame Height	D Frame Depth	Ankra Part No.	A Overall Width	B Spool Width	C Frame Height	D Frame Depth
41681-10	9.75	6.82	5.38	3.50	43573-11-RC	8.58	2.25	6.19	3.50
41681-10-RC	10.75	6.82	5.38	3.50	43573-12	7.55	3.25	6.19	3.50
41691-10	7.55	4.75	3.90	5.00	43573-12-RC	8.58	3.25	6.19	3.50
41691-12	7.55	4.75	3.90	5.00	43573-13	7.55	4.12	6.19	3.50
41696-10	7.25	4.50	10.00	4.00	43573-13-RC	8.58	4.12	6.19	3.50
41696-11	7.25	4.50	10.00	4.00	43579-20	7.49	4.75	4.07	4.00
43488-20	10.05	7.25	4.07	4.00	43579-20-RC	8.49	4.75	4.07	4.00
43488-20-RC	11.06	7.25	4.07	4.00	43908-10	10.00	7.25	5.60	5.00
43563-10	7.49	4.63	5.31	3.50	43997-10	9.95	7.25	3.90	5.00
43563-10-RC	8.49	4.63	5.31	3.50	43997-10-RC	10.95	7.25	3.90	5.00
43564-12	7.55	4.63	6.19	3.50	44466-10	7.61	4.63	5.31	3.50
43564-12-RC	8.58	4.63	6.19	3.50	47640-30	6.13	2.12	3.80	2.95
43564-14	7.49	4.63	5.31	3.50	48101-10	10.00	6.00	4.25	4.00
43564-14-RC	8.49	4.63	5.31	3.50	48101-10-SG-RC	11.00	6.00	4.25	4.00
43564-16	7.49	4.75	4.07	4.00	48101-14	10.00	6.00	5.50	4.00
43564-16-RC	8.49	4.75	4.07	4.00	48101-14-SG-RC	11.00	6.00	5.50	4.00
43565-12	7.59	4.63	6.64	4.00	48783-10	9.25	4.63	5.31	3.50
43565-12-RC	8.59	4.63	6.64	4.00	49207-12	7.59	4.74	6.52	3.95
43565-13	9.33	4.63	6.00	4.50	49207-12-RC	8.58	4.74	6.52	3.95
43565-14	7.59	4.63	6.64	4.00	49207-13	7.59	4.74	5.91	3.95
43565-14-RC	8.59	4.63	6.64	4.00	49207-13-RC	8.59	4.74	5.91	3.95
43565-15	7.59	4.63	6.00	4.00	49207-18	7.59	4.75	5.25	3.95
43565-15-RC	8.59	4.63	6.00	4.00	49207-18-RC	8.59	4.75	5.25	3.95
43573-10	7.55	4.63	6.19	3.50	49207-19	7.59	4.74	6.52	3.95
43573-10-RC	8.58	4.63	6.19	3.50	49706-10	9.00	4.88	7.00	4.50
43573-11	7.55	2.25	6.19	3.50	49706-11	8.75	4.88	6.00	4.50



PORTAWINCH™ & PORTAANCHOR™

Versatile solutions for securing flatbed cargo.

PATENTED

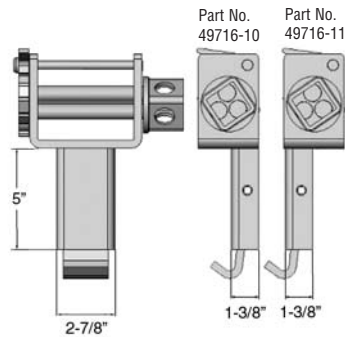
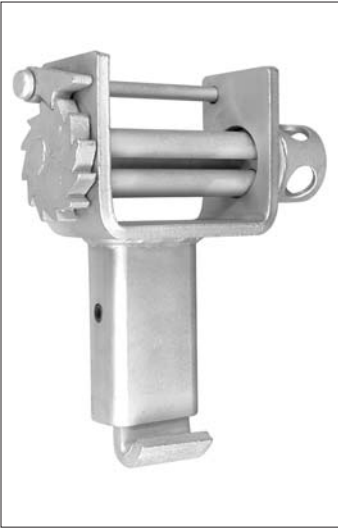
Ankra's PortaWinch and PortaAnchor products turn standard stake pockets into solid anchor points for securement straps. You can position the hold-down straps anywhere along either side or front and back of the trailer using the stake pockets that best accommodate your load.

You no longer have to deal with clamp-on winches that can vibrate loose or relying on ratchet straps that just can't apply the amount of tension you can get with a winch and winch bar. Fully FMCSA compliant, the PortaAnchor offers a legal solution for a DOT secure anchor point.

Turn stake pockets into strap anchor points.

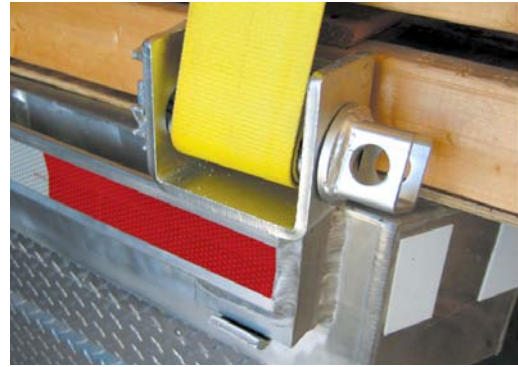
- Secure anchor straps securely and legally.
- Working Load Limit (WLL) 5,500 lbs./2,495 kg.
- Uses standard 4" straps, chain and winch bar.
- Fits all stake pockets.
- Installs easily without tools.
- Works over tires and toolboxes.
- Removable when not in use.

PortaWinch



Part No. 49716-10
Standard outward off-set
Weight: 11.5 lbs./5.2 kg.
Working Load Limit (WLL) 5,500 lbs.

Part No. 49716-11
Inward off-set to allow for track-mounted tarp clearance
Weight: 11.5 lbs./5.2 kg.
Working Load Limit (WLL) 5,500 lbs.



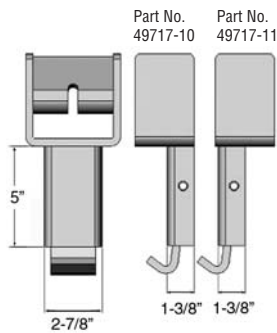
Installs easily with patented spring-loaded front hook design that distributes the load evenly across the stake pocket.

Cap has four holes and accommodates standard winch bars.

Also available in SilverCap Ratcheting Cap models 49716-10-RC and 49716-11-RC.

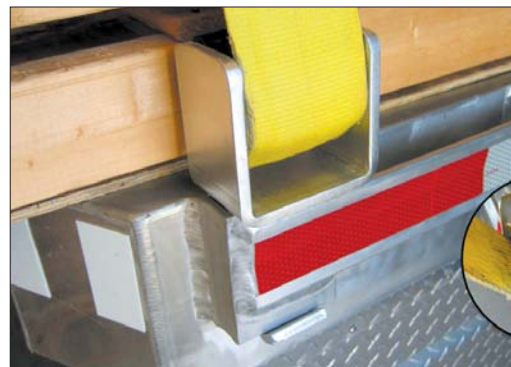


PortaAnchor



Part No. 49717-10
Standard outward off-set
Weight: 8.9 lbs./4.0 kg.
Working Load Limit (WLL) 5,500 lbs.

Part No. 49717-11
Inward off-set to allow for track-mounted tarp clearance
Weight: 8.9 lbs./4.0 kg.
Working Load Limit (WLL) 5,500 lbs.



PortaAnchor accepts chain and hook load assemblies, 4-in. web straps with flat hooks and web straps with chain anchors or web hooks.



Winch Bars & Accessories

Tapered and angled at the end for easy operation, Ankra's 34-inch Winch Bars are knurled at two sections and the tip is grooved to improve grip in the winch. They are heat-treated for extra strength, cycle tested to simulate years of heavy use and proof loaded during manufacturing. **To be used to release chain load binders as well as tension winches. Not to be used as a cheater bar to tension load binders.**



Combination Box End Painted
Part No. 42313-12 Weight: 6.5 lbs./2.95 kg.



Standard Painted
Part No. 42313-10 Weight: 5.0 lbs./2.27 kg.



Combination Chrome
Part No. 42313-19 Weight: 6.5 lbs./2.95 kg.



Standard Chrome
Part No. 42313-17 Weight: 5.0 lbs./2.27 kg.



Combination Painted
Part No. 42313-20 Weight: 6.5 lbs./2.95 kg.

Winch Accessories



H-2 Hook
Part No. 44102-11
Flame-cut from 5/8-in. material and can be welded flat on trucks. Accepts web loops, D-rings, cable or rope. Meets CHP anchorage requirements when properly secured.
Weight: .61 lb./ .28 kg.



Corner Iron Hook
Part No. 44122-10
Constructed with no sharp corners to reduce abrasion to rope or cable.
Weight: .63 lb./ .29 kg.



Web Winder
Part No. 45801-10
Constructed of all steel, the Ankra Web Winder winds 2-in., 3-in. and 4-in. webbing binders for compact storage. Easy to attach to truck rails, easy to remove with tapered forks, and easy to disassemble for storage.
Weight: 3.25 lbs./1.48 kg.

Winch Strap Assemblies

Ankra Winch Strap Assemblies team heavy duty, wear- and weather-resistant load control straps with strong, dependable hardware to meet the demanding conditions of flatbed operations. Ankra straps meet California Highway Patrol specifications and are tested for strength and durability. They can be supplied with a loop end for permanent attachment to truck winch mandrels. Meets or exceeds WSTDA T-1 standard specifications for synthetic web tiedowns.



2" Winch Strap Assemblies Breaking strength 10,000 lbs./4,545 kg.; WLL 3,333 lbs./1,515 kg. using 41632-13 Webbing



Part No. 41659-10-27 2-in. x 27-ft. Winch Strap w/40891-18 Flat Hook
Part No. 41659-10-30 2-in. x 30-ft. Winch Strap w/40891-18 Flat Hook



Part No. 41659-11-27 2-in. x 27-ft. Winch Strap w/40978-11 Delta Ring
Part No. 41659-11-30 2-in. x 30-ft. Winch Strap w/40978-11 Delta Ring

IT IS THE OWNER'S AND USER'S RESPONSIBILITY TO DETERMINE SUITABILITY OF A PRODUCT FOR ANY PARTICULAR USE. REMEMBER, ALL STRAP ASSEMBLIES OR SYSTEMS ARE AS STRONG AS THEIR WEAKEST COMPONENT INCLUDING THE POINT OF ATTACHMENT.